



STEAM WAY 

INTERNATIONAL

INCORPORATED

EQUIPMENT & CHEMICAL TECH CATALOG

2003 - 2004

A Complete Buyer's Guide

- Cleaning • Restoration • Deodorization • Remediation •

About Steam Way International



Innovation With A Proven Track Record

Since 1968 Steam Way International has been manufacturing carpet and upholstery cleaning equipment and a complete line of cleaning, deodorizing, and restoration chemical solutions. Over 35 years of product innovation and industry firsts, along with billions of yards of safely and effectively cleaned carpeting testify to the fact that Steam Way continues to set the standard in reliability and performance.

More Than A Catalog, A Product Showcase

The Steam Way Cleaning TECH-CATALOG stands ready to serve you as a constant source of product knowledge and product application information. The Steam Way "TOTAL SUPPORT PROMISE" is demonstrated by the technical, management, marketing and business growth training products and programs highlighted in this catalog. The Steam Way Cleaning TECH-CATALOG provides you with the information you need to help you solve the challenges and problems you face in your cleaning and restoration business. Additional support and product application information is always available from your local Steam Way Distributor or by calling us at 1-800-447-8326.

International Network of Distributors

Steam Way's equipment, chemical, and training products are sold exclusively through our international network of factory authorized and trained distribution companies. These independently owned and operated support centers provide sales and service of Steam Way products and are located all over the United States and Canada, as well as five continents worldwide. This network of value adding distribution centers sponsor Steam Way's many training programs as well as being factory approved warranty service centers. For the name of your nearest Steam Way Distributor, call 1-800-447-8326 or log onto www.steamway.com.

Platinum Plus Protection Plan™

Steam Way's truck mounts and high performance portable cleaning and restoration equipment are covered under the industry's most comprehensive parts replacement and/or repair warranty. From the frame to the heat exchanger, you are covered. Steam Way's vendor partners provide the longest and strongest coverage available on power systems, solution pressure systems, heating systems, and vacuum recovery systems. This protection extends not only to major components, but includes electrical components, gauges, hoses, and more. Ask for a copy of our complete PLATINUM PLUS PROTECTION PLAN warranty.

Steam Way guarantees your satisfaction with the performance of our chemical products too. If for any reason, you are not satisfied with the performance of any Steam Way chemical product, we'll provide you with an alternate product free of charge.

www.steamway.com - Visit Us on the Internet

Our web site can provide you at any time with the latest product information and application procedures, as well as downloadable and/or printable support information for all of our products, including material safety data sheets for chemical products.

Visit our Manufacturing Facilities

Steam Way's equipment and chemical products are manufactured in Denver, Colorado. Our two factories can be toured if you are coming through Denver. You'll see the quality, manufacturing control, and craftsmanship that goes into every truck mount and every gallon of chemical. You'll meet the people that build, service, sell and support our products firsthand.



Catalog Index



About Steam Way International 2-3

Equipment, Tools, Accessories

Truck Mounted Equipment 4 - 7

High Performance Portable, Heater Cart 8 - 9

Wands, Cleaning Tools, Sprayers 10 - 12

Truck Mount/Van Accessories 13 - 15

Support, Training Education

SelectTeam Marketing Support/Training Materials 16 - 17

IICRC Certification Schools 18

SOLUTIONSFEST™/TechZONE Customer Care Training 19

Cleaning and Restoration Procedures

Product Application/Cleaning Procedures 20 - 23

Cleaning, Deodorizing, & Restoration Chemicals

Carpet Cleaning Presprays 24 - 25

Carpet Cleaning Extraction/Rinse Detergents 26 - 27

Upholstery/Drapery Cleaning 28 - 30

Oriental/Area Rug Cleaning 30 - 31

Low Moisture Carpet Cleaning 32

Specialty Application 32 - 33

Spotting, Stain Treatment 34 - 37

Consumer/Client Resale Products 38

Fabric Protection 39

Deodorization & Restoration 40 - 41

Unsmoke® Restoration Products 43 - 46

Ceiling and Wall Cleaning 46

Tile and Grout Cleaning 47

Hard Surface Floor Maintenance 48 - 49

Residential Wood Floor Care 50 - 51

Truck Mounted Equipment...



POWERMATIC® LEGACY 2100



POWERMATIC® LEGACY 2100

THE LEGACY OF A CHAMPION

Thousands upon thousands of PowerMatic® owners can testify to the incredible cleaning performance and long term reliability of this marvelously built truck mount. The PowerMatic® Legacy 2100 is still the truck mount by which the cleaning performance of all others are measured. If you are even considering expanding into hard surface floor and stone care, the PowerMatic® Legacy 2100 is the only truck mount that will maintain the cleaning temperatures you need at the necessary higher water flow rates.

THE POWER OF WATER FLOW

Strip away the others hype and promises and you will see that nobody, but nobody's truck mount can produce hot water at higher water flow rates as a PowerMatic® Legacy 2100. The PowerMatic® Legacy maintains 250°F cleaning solution temperatures at 40% more water flow than heat exchange equipped truck mounts. Higher water flow means more efficient flushing of

soils, reduced chemical usage, and quicker drying times. Put the PowerMatic® Legacy 2100 side-by-side with any other truck mount built in the world, and it will out clean; out perform; and out heat; and it will continue to perform that way for years to come.

ELEGANTLY EQUIPPED

The PowerMatic® Legacy 2100 has more time and money saving features than any other truck mount. An automatic solution filling tank allows your rinse detergent to be mixed hot. A three-way quick-change valve allows for rapidly changing from pressure washing to carpet cleaning to upholstery cleaning. The 2250 w generator provides spark to the fuel oil heating system and auxiliary power for power wands, air movers, lights and more. The large capacity waste water recovery tank (105 usable gallons) increases time spent on the job earning money. Automatic downtime prevention mechanisms are built right in. Before you spend thousands of dollars more for a truck mount that does less, get the facts on the dual wand cleaning, deflooding, hard surface cleaning and awesome carpet cleaning power of a PowerMatic® Legacy 2100.

BORN TO RUN, BRED FOR RELIABILITY

No other truck mount has the long-term performance and maintenance track record of the PowerMatic® Legacy 2100. Born to run means uncompromising component engineering that produces the most consistent truck mount performance in every category. Bred for reliability means an easy to operate and maintain structure with perimeter access for service. Arrange a factory authorized demonstration of the PowerMatic® Legacy 2100. If it doesn't get hot, we don't make it.



"As a proud and faithful owner of three PowerMatics, I can't think of a single reason not to buy one. I see the agony that so many people go through with deciding which truck mount to buy and I am so GLAD I don't have to go through that process anymore. The PowerMatic is very versatile and you can grow your business from cleaning by yourself to dual wand cleaning and doubling your production with a single truck. You can't find anything close to it's price that will outclean it."

Ron Curtis
Curtis and Daughter Fiber Cleaning
Damascus, Maryland

Quick Reference Guide

Solution Heating	240XL On-Demand Fuel Oil Heating System attains 250°F at 2.1 gpm waterflow
Solution Pressure	CAT Industrial produces up to 1500 PSI at 3.5 gpm.
Vacuum	Roots 45 Vacuum Blower System produces up to 325 cfm (293 cfm at 10" hg)
Engine	Kohler 25HP air cooled engine

Legacy® 2100

For More Details, See Machine Specification Sheet

...If It Doesn't Get Hot, We Don't Make It



STEAM WAY® 4100 LX



UNCOMPROMISING CLEANING PERFORMANCE

Whether you are looking to maximize heat, pressure, or vacuum recovery, the Steam Way® 4100 LX delivers uncompromising cleaning performance without breaking the bank. With a new twist on an established favorite, the Steam Way® 4100 LX provides you with reliable fuel oil fired heating performance in a compact, proven package. At the same time increased engine power allows for superior vacuum recovery performance.

A TRUE HARD SURFACE CLEANER, READY FOR RESTORATION

If you are even considering adding hard floor cleaning, or tile and grout cleaning to your service menu, the Steam Way® 4100 LX will deliver consistently hotter cleaning temperatures at water flow rates above 3 gallons per minute. The Roots 45 RAI Vacuum Recovery System allows for excellent performance at water damage restoration, deflooding and dual wand carpet cleaning.

UPGRADED FOR SAFETY AND EASE OF OPERATION AND MAINTENANCE

Special design enhancements and advanced engineering applications have provided the Steam Way® 4100 LX Truck Mount with an easy to access, perimeter serviceable layout. A new protection shield denies unauthorized access to most moving parts, yet is easy to remove for service and adjustment.

TRIED AND TRUE FOR THE LOYAL BLUE

Every detail has been considered to make a dependable favorite available in a higher performance package. Thousands of Steam Way® truck mount owners can testify to the uncompromising cleaning performance of this unit. The units engineering upgrades were directly designed from the input of cleaning and restoration professionals just like you. Don't settle for less, when such a power packed performance package is available at such an attractive price.

Quick Reference Guide

Solution Heating	220,000 btu fuel oil fired on demand system maintains 250° F at 2.0 gpm
Solution Pressure	CAT Industrial Solution Pump produces up to 1200 PSI
Vacuum	Roots 45 RAI Vacuum Blower System produces up to 350 cfm (with 330 cfm at 12:Hg)
Engine	Kohler 20 Hp Command Air Cooled Engine

Steam Way® 4100 LX

For More Details, See Machine Specification Sheet

"We are just now reviewing the past year and it was very successful! As always, a large part of our success is because we run the best equipment supported by the best people in the industry - Steam Way International."

*Joe Farrell
Sunrise Carpet Cleaning
Snowmass Village, Colorado*

Truck Mounted Equipment...



STEAM WAY 9100 LX

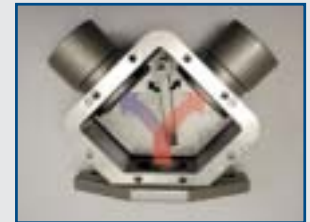


FIRST WITH AN AUTOMATIC EXHAUST DIVERTER VALVE! DON'T BUY AN IMITATION!



MEET THE TRUCK MOUNT THAT CHANGED THE WAY HEAT EXCHANGERS WORK

The 9100 LX incorporates technology that has revolutionized the industry in the way heat exchangers work. Steam Way introduced and patented the design of the industry's very first automatic exhaust diverter valve. This innovative beak through allows the quadexchange™ four-phase heat accumulation system to attain and maintain cleaning solution temperatures up to 220 degrees F. The automatic exhaust diverter valve basically works by bypassing the 1400°F engine exhaust out of the heat exchanger system once a desired temperature is attained. This eliminates the need for by-passing the hot water, which previously unavailable absolute control over



turely fills up your waste tank. It also allows for solution temperature in a heat exchange system.

RAISE YOUR EXPECTATIONS, LOWER YOUR OPERATING COSTS

Every detail has been carefully analyzed to bring you a cleaning power plant that optimizes your performance, without unnecessary overkill. The 22HP Kawasaki engine provides you with liquid cooled performance and longevity, yet saves you up to \$1600 a year in fuel costs compared to a PTO or 32HP or larger engine. At 500 lbs, the 9100 LX provides superior cleaning performance to machines that weigh twice as much and cost thousands of dollars more. Less weight saves you even more on fuel costs for your van and reduces wear and tear cost on your van.

HIGHER PERFORMANCE, LOWER PROFILE

The compact design of the 9100 LX makes it smaller and lighter in your van. The lower profile means you can actually use your rearview mirror again! Uncompromising in cleaning performance, 330 cfm at 12" lift of vacuum, 220° F cleaning solution temperature, 1250 psi, yet uncomplicated to operate, service and maintain. You don't have to be Harry Houdini to work on your machine as its computer assisted design allows for perimeter accessibility for service and maintenance.

COHESIVE DESIGN, BREAK-THROUGH TECHNOLOGY

Steam Way® has always been known for manufacturing truck mounts that achieve the hottest, hot solutions of any machine in their class, under all conditions. Now you know we have led the way again in how heat exchange truck mounts achieve that goal. Every single component has been designed to work cohesively within the CAD

engineered framework. This breakthrough technology allows for better exhaust directional control mechanisms, reduced exhaust emissions, and easy access safety panels for operations and maintenance.

"The 9100LX is a great machine! The vacuum is much more than my other machine could produce, and they have the same blower! I guess it comes down to design. Steam Way did a great job!"
 Richie Gill
 Mission Carpet Care
 San Luis Obispo, California



Quick Reference Guide

Solution Heating	Quadexchange™ Thermal Accumulator Heat Exchanger maintains 220°F at 1.5 gpm waterflow
Solution Pressure	CAT 3CP Industrial produces 1200 PSI (4.2 gpm at 1200 psi)
Vacuum	Roots 45 RAI Vacuum Blower System produces up to 350 cfm (with 330 cfm at 12" hg)
Engine	Kawasaki 22 HP water cooled engine

9100 LX

For More Details, See Machine Specification Sheet

...That Changed The Way Heat Exchangers Work



STEAM WAY® SIDEKICK 6100



THE PERFECT UPGRADE

Steam Way® quality and support are available in the perfect economical choice. Whether you are buying your first truck mount or you are adding to a fleet, the SideKick 6100 may well be the perfect upgrade and the perfect choice. The SideKick 6100 is simple to operate and maintain, making it ideal for standardizing a large operation. Compared to portable extractors, it makes carpet cleaning significantly faster and easier, and reduces drying time, making the SideKick 6100 the perfect upgrade for portable extractor operators. The SideKick 6100 will fit easily into most mini-vans, vans, and pick-up trucks, and many sports utility vehicles.

MATCHED FOR YOUR GROWING BUSINESS

Powered by the energy efficient, fuel-miser 16 HP Briggs & Stratton Air Cooled Engine, the SideKick 6100 meets or exceeds CARB and other government mandated emissions standards. The Roots 33 Vacuum recovery system produces up to 175 cfm of air movement, with an average of 145 cfm at 8" Hg. This provides you with plenty of vacuum recovery power for carpet cleaning and deflooding up to 150 to 200 feet away from the machine. The multisource heat exchange system will attain and maintain cleaning solution temperatures up to 180° F. A special water by-pass system prevents overheating the solution during deflooding, water removal, and upholstery cleaning. The industrial rated superior lasting CAT Solution Pump produces up to 800 psi in solution pressure.

PACKED WITH FEATURES

The SideKick 6100 may be an economical choice, but it is packed with operation, maintenance, and cleaning enhancement features. A solution pressure monitoring gauge, auto-inject solution flow meter, tachometer, hour meter, electric start ignition, and panel mounted throttle and choke control provide you with complete control. Its solution temperature attainment and cleaning performance rivals truck mounts costing thousands of dollars more. A pressure relief and heat control system provides safety against extreme pressure build-up when the machine operates without water flow.

PERFORMANCE ENHANCING OPTIONS AVAILABLE

Appearance and safety can be enhanced with the addition of a panel kit, a series of 4 marine aluminum panels that cover the top, sides, and back of the machine. The panel kit prevents objects from coming in direct contact with machine components and adds to your machine's professional appearance. If you choose the panel kit option, you may also want to consider adding the sound proofing kit that reduces the noise level of the machine up to 15%. This kit also includes an exhaust fan to keep the interior of the machine cooler. With specifically designed installations, the decibel level can be reduced to 65 decibels. Together, the Panel Kit and the Sound Proofing Kit have the additional benefit of adding 20 - 30° F (11 - 12° C) to the cleaning solution temperature.

If space is at an absolute premium, you can eliminate space requirements for a large waste recovery tank by using an optional Automatic Waste Water Pumping System in a 30 gallon waste tank to pump the recovered waste water back into the home or business for disposal into the sewage treatment system.

Quick Reference Guide

Solution Heating	Multi-Source Heat Exchange System attains up to 180°F at 1.5 gpm waterflow
Solution Pressure	CAT Industrial produces up to 800 PSI
Vacuum	Roots 33 Vacuum Blower produces up to 175 cfm (with 145 cfm at 8" hg)
Engine	Briggs & Stratton 16HP air cooled engine

SideKick 6100

For More Details, See Machine Specification Sheet

"My cleaning company used Steam Way Equipment and Steam Way Chemicals. We used these materials because they worked better than anything else we had used previously. Whether it came to questions, service, or support, the Steam Way International team was always ready to help."

Dane Gregory
3D Corporation
Stevens Point, Wisconsin



High Performance Portable Equipment...



ULTRAMATIC® 900

STEAM WAY 900

ULTRAMATIC

CARPET & UPHOLSTERY CLEANER



EXPAND YOUR HORIZONS

This powerful portable with the truck mount personality defines versatility in high performance carpet cleaning. If you are looking for truck mount or high performance hot water extraction cleaning in environments that are impractical or impossible to use truck mounts, the UltraMatic® 900 is your best option. A must for serious commercial carpet cleaning contractors and in-house maintenance staffs who are tired of the cleaning compromises associated with walk-behind extractors or traditional "box" extractors. The UltraMatic® 900 delivers solution pressures and vacuum recovery performance that rival a truck mount's, with automatic solution fill and waste dumping systems that give you truck-mount-like cleaning on the 33rd floor.

A Leading Carpet Mill's Specifications And Industry Methods Testing Protocol Define High Performance Hot Water Extraction As The Following:

- Solution pressure between 200 - 600 psi
- Solution water flow greater than 1 gallon per minute
- Vacuum recovery capacity: Water lift 200" or greater; Airflow 100 cfm or greater
- Cleaning solution temperature > 130°F at the carpet

The Steam Way® UltraMatic® 900 meets or exceeds all these specifications when used in conjunction with the Magna-Heater HP Portable Propane Heating System

SPECIAL FEATURES, PROFIT BUILDING BENEFITS

The UltraMatic® 900 can be set up stationary, "in-truck" or near the janitors closet and effectively clean within a 150 foot radius. Yet, it's versatile enough to be wheeled right next to the job. It's fiberglass housing is less likely to crack when cold, and withstands higher temperature ranges than rotationally molded plastic. The solution pump can be operated independently for light duty pressure washing. The vacuum blowers can operate independently to reduce vacuum for upholstery cleaning. A solid state electronic vacuum shut-off prevents waste tank overflow, which can cause premature vacuum motor failure. Automatic fill/disposal systems allow for continuous cleaning.

FASTER CLEANING RATES, BETTER CLEANING PERFORMANCE

The UltraMatic® 900 can be coupled with the Magna-Heater HP Heater Cart to produce consistently hot cleaning solution temperatures at required higher water flow rates (>1.0 gpm). Used with power extraction wands, deep extraction cleaning rates up to 3000 square feet per hour are possible.

Looking For Truck Mount Type Cleaning On The 33rd Floor?



Quick Reference Guide

Motor	1 1/2 HP Leeson electric motor
Solution Pressure	Direct driven industrial CAT Pump, up to 600PSI
Vacuum	Three two-stage "Whisper Quiet" blower, produces up to 100 cfm, 200" Lift
Auto Pump/Dump	Convenience, no more carrying water

UltraMatic® 900

For More Details, See Machine Specification Sheet

...High Performance Portable Equipment



HEATING CART

MAGNA-HEATER H.P.

PORTABLE PROPANE HEATING SYSTEM

The Magna-Heater H.P. is designed to work with almost any portable carpet cleaning machine. Its rolling cart design makes it easy to transport and move right along with your portable machine. Its all steel frame construction is designed to last. The copper alloy coils are pressure tested to 1000 psi so it can be used safely and effectively on high pressure or low pressure portable equipment. Safety features include a low exhaust temperature and fail safe pilot light. The Magna-Heater H.P. creates almost 65,000 B.T.U. for a 130 Degree temperature rise at 45 G.P.H. The down line connection will extend the machine's pump life because heated cleaning solutions do not pass through the solution pump. Because it uses clean burning propane, it has low exhaust and can be used on most inside cleaning jobs. It is thermostatically controlled so that you can maintain a constant and accurate desired temperature. You can use the Magna-Heater H.P. with truck mounted equipment also! Now you can take advantage of hotter cleaning solution temperature benefits such as faster cleaning, less chemical usage, and faster drying times. You can actually double the activity of your cleaning chemicals. The Magna-Heater H.P. weighs only 92 pounds and is easily moved with its wheels and handles. Its dimensions are 30"L x 34"H x 20"W. Also use this as a booster for heat exchanger units.



FEATURES - BENEFITS - SPECIFICATIONS

- Easy portability, all steel frame
- Copper alloy coils pressure tested to 1,000 P.S.I. for use on high pressure and low pressure equipment
- Low exhaust temperature
- Fail-safe pilot light
- Adapts to almost any portable or truck mounted machine
- Creates 65,000 BTU input for 130°F temperature rise at 45 G.P.H.
- Down-line connection to extend pump life (heated solutions do not pass through the solution pump).
- Cleaning-burning propane and low exhaust for inside cleaning jobs.
- Thermostat control to maintain constant desired temperature.
- Weight: 92 lbs., 30" L x 34"H x 20"W.

part number 10-8500

THE LIE DETECTOR™

There are a lot of claims out there about what kind of cleaning solution temperatures various truck mounts can maintain. What you see in advertising is not always what is produced in the field. What's worse, what you often see on the temperature gauge of the machine is not even close to what cleaning solution temperature the machine is really producing. Steam Way® has introduced a small, but effective device you can get from your local Steam Way® Distributor. It's called the Steam Way® Lie Detector. It's a simple device that you plug into your truck mount scrub wand that tells you what temperature your cleaning solution is as it moves through your wand and strikes the carpeting. For some reason, it has the competition running scared from demonstrations. You can use the Lie Detector under your most extreme, demanding conditions to see what your truck mount is really doing out in the field. Whether you're in the market for a new truck mount and want to test the temperature claims of an advertisement, or you already own a truck mount and you just want to see whether its performing as advertised, the Steam Way® Lie Detector is ready for you.



part number 1909906

If It Doesn't Get **HOT**, We Don't Make It!

Cleaning Wands...



12" Stainless Steel "Protection Shield" Scrub Wand

This lightweight (10 lbs) carpet cleaning tool is manufactured with polished stainless steel for durability and a lasting finish. The Steam Way 12" Stainless Steel Scrub Wand has a high pressure valve and flood jet for efficient cleaning of carpets. The scrub wand is designed to handle working pressures up to 600 - 700 P.S.I., comes with an adjustable handle, and is designed for easy maintenance and long life. Its enclosed jet "Protection Shield"™ design prevents overspray, streaking, and retains heat. In comparison-testing with other industry wands, the Steam Way 12" Stainless Steel Scrub Wand was shown to maintain heat better than competitive models. Its one flood jet set-up allows carpets to be cleaned quickly and effectively with rapid drying time. Quite simply the highest quality and highest productivity scrub wand available. Designed to be used with both truck mounted and high performance portable equipment.

part number 10-5090



12" Stainless Steel "S" Protection Shield Scrub Wand

This lightweight carpet cleaning tool is manufactured with polished stainless steel for durability and a lasting finish. With a special "S" arrangement, it reaches into and under hard-to-reach areas and reduces operator fatigue. The "S" wand has a high pressure valve which will handle pressures to 600 - 700 P.S.I. Its one flood jet arrangement reduces drying time and eliminates streaking. The enclosed jet "Protection Shield" design prevents overspray, streaking, and reduces temperature loss. The "S" wand comes with an adjustable handle and is designed to be used with both truck-mounted and portable equipment. Its design reduces stress on lower back muscles for fatigue reduction. Its outstanding track record of reliable performance will give you the consistent cleaning performance your customers demand.

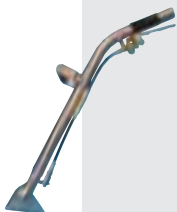
part number 10-5100



Economy Scrub Wand

This specially designed economical scrub wand is designed to be used with lower pressure (less than 400 P.S.I.) portable extraction equipment. Its economical price does not compromise on performance though. Its unique lightweight design will effectively clean all types of carpets without streaking. The adjustable handle will make it easier for technicians to use and reduce operator fatigue. Its 12" wide arrangement will increase your productivity. Ideal for use in dual wand set-ups or with your portable equipment, it will provide an excellent cleaning job.

part number 10-5700



Long Handled Stair Wand

The Steam Way Long Handled Stair wand is a newly designed and manufactured wand for easier cleaning of stairs and hard-to-reach areas. Manufactured of stainless steel, the Steam Way Long Handled Stair Wand includes the "Protection Shield" that is exclusive to Steam Way wands for enhanced temperature retention as well as prevention of overspray. This 36" wand allows stairs to be cleaned from a standing position and its easy maneuverability make stair cleaning faster and easier with less fatigue on your back.

part number 10-3200



E.P.C. 380 Hard Surface Cleaning Wand

Constructed of stainless steel for durability and long life, the E.P.C. 380 will allow you to pressure-wash tile floors, concrete, asphalt and other hard surfaces and vacuum up the waste water simultaneously. The E.P.C. 380 is 15" wide and has adjustable wheels for ease of operation and different cleaning depths. The handle is adjustable so that it fits you. The slotted squeegees surrounding the wand contain the waste water until it can be vacuumed up, leaving the surface virtually dry - immediately. Five jets allow for maximum coverage and cleaning ability. The E.P.C. 380 is so unique, a patent has been applied for. It is rated for use up to 1000 P.S.I.

part number 10-5501

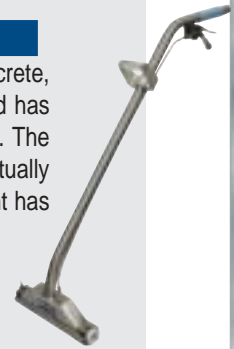
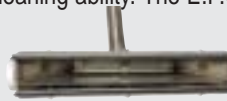
...Pressure Washing Wands/Tools



E.P.C. 380 Hard Surface Cleaning Wand

Constructed of stainless steel for durability and long life, the E.P.C. 380 will allow you to pressure-wash tile floors, concrete, asphalt and other hard surfaces and vacuum up the waste water simultaneously. The E.P.C. 380 is 15" wide and has adjustable wheels for ease of operation and different cleaning depths. The handle is adjustable so that it fits you. The slotted squeegees surrounding the wand contain the waste water until it can be vacuumed up, leaving the surface virtually dry - immediately. Five jets allow for maximum coverage and cleaning ability. The E.P.C. 380 is so unique, a patent has been applied for. It is rated for use up to 1000 P.S.I.

part number 10-5501



High Pressure Washing Guns

Steam Way's High Pressure Washing Guns are capable of high pressure washing up to pressures of 3,000 P.S.I. at 10 gpm at 300°F. Steam Way's High Pressure Guns are adaptable to different size jets to meet the needs of your particular jobs. The guns are durably built and designed for long life. Their special grip handle makes them easy to use. You can now easily earn extra money with your truck mounted equipment. A very popular accessory with these pressure washing guns is the DirtBlaster jet, a 0° spinning jet to increase your cleaning power.

30" Barrel part number 10-6094

48" Barrel part number 10-6095

Dirt Blaster Jet part number 48-K090



Sprayers/Applicators...

magna-bright® In-Line Pressure Sprayer

Now you have a choice! The Magna-Bright In-Line Pressure Sprayer connects directly to your truck mount or high performance portable solution line. You use the pressure and temperature capabilities of your equipment to make a more productive and efficient sprayer. The Magna-Bright In-Line Pressure Sprayer can be used to apply presprays, traffic lane cleaners, carpet protectors, deodorizers, dyes and much more! You save money by the time saved mixing chemicals; your in-line sprayer automatically mixes them for you. You save money because you can clean faster by using the pressure and temperature of your equipment allowing for better chemical penetration and agitation. One sprayer can now do it all because all you have to do is change containers! No more pumping! No more mixing! No more fumbling with electric cords! No more pump problems!

part number 4890287



Multi•Sprayer Electric Sprayer

The Multi•Sprayer™ is the answer to most chemical spraying applications, makes changing chemicals easy and opens profitable new business opportunities. Use it for traffic lane cleaners, spotting agents, soil and flame retardants, brand name protectors like FABRICOVER®, carpet dyes, degreasers, deodorizers, insecticides, etc. With an accessory wand, it can also be used to clean acoustical ceilings. Other accessory tools enable you to use it with your present vacuum for upholstery or drapery cleaning. The MULTI-SPRAYER is the highest quality electric sprayer we have ever found. When the job changes, the cleaning chemical changes too. Now the Multi•Sprayer™ makes it easy to change chemicals from job to job by simply switching jugs. No mess. No fuss. No costly chemical waste.

part number 4804338



Cleaning Tools...



Short Handled Stair Tool

This specially designed cleaning attachment is manufactured with lightweight aluminum and coated with a hard white epoxy finish. The Steam Way Short Handled Stair Tool has an enclosed jet to prevent overspray and for gentle treatment of fabric. The Short Handled Stair Tool can be used to clean stairs, around furniture, and in other hard-to-reach places. They are also useful in spot and stain removal. The Stair Tools have working pressures up to 400 P.S.I. The Short Handle Stair Tool uses the mini-head adapter system for less cumbersome operation and increased productivity.

Ready-to-use part number 10-3100 Tool Only part number 10-3101



Standard Upholstery Tool

If you prefer cleaning upholstery with a direct spray and vacuum pattern, this is the tool for you. The Standard Upholstery Tool is manufactured with lightweight aluminum. The enclosed jet-design provides maximum cleaning performance with working pressures of 35 - 400 P.S.I. The specially arranged valve and trigger reduces operator fatigue as well as allows for ease of operation. The epoxy coated surface will safely clean all fabrics and will look great for years. Ideal for synthetic upholstery cleaning. The Standard Upholstery Tool is designed to be used in conjunction with Steam Way's exclusive mini-head adapter to allow easier and less cumbersome usage.

Ready-to-use part number 10-2002 Tool Only part number 10-2001



Steam Way Hydro-Kinetic™ Upholstery Cleaning Tool

Conventional upholstery cleaning tools have by-passed the cleaning power of modern equipment because of a fear of over-wetting. The "Hydro" principle allows you to use a higher solution pressure and a more effective vacuum pressure to achieve maximum cleaning without the fear of over-wetting. The "Hydro" principle is powerfully soft on fabrics because: 1) the angle of the spray in relation to the fabric produces a greater shear factor to remove soil from the fabric; 2) the open port air flow chamber allows a full kinetic force of cleaning solution over the surface of the fabric, not through it; 3) the open port vacuum system removes the soil and cleaning solution prior to the final vacuum suction. The Hydro-Kinetic Upholstery Cleaning Tool takes full advantage of the "Hydro" principle and is for use up to 400 P.S.I. with truck-mounts or portables. The design of the tool is so unique, it is patented. (U.S. Patent no. 825,623). The Hydro-Kinetic Upholstery Cleaning tool is available ready-to-use with a 10 foot mini-head adapter system, or available separately if you already have a mini-head adapter. The most innovative upholstery cleaning tool ever developed! Employs the power of your cleaning equipment rather than by-passing it and is ideal for truck mounts

Ready-To-Use part number 10-2049 Tool Only part number 10-2050



Drapery Tool

This specially designed and anodized Drapery Cleaning Tool is 7 1/2" across for maximum cleaning performance. It is designed to work with all non-chlorinated solvent solutions. Its one-jet spray effectively covers all areas without creating overspray. The Steam Way Drapery Cleaning tool works in conjunction with the Mini-Head Adapter for easier and less cumbersome operation.

Drapery Tool With Mini-head Adapter part number 10-3500 Drapery Cleaning Tool Only part number 10-3550



Drapery Pleat Vacuuming Tool

The Drapery Cleaning Tool is complemented by the use of the Drapery Pleat Vacuuming Tool. This specially formed Drapery Pleat Vacuuming Tool allows you to effectively vacuum clean drapery pleats. The Pleat Vacuuming Tool will effectively remove cleaning solvents, dirt, dust, and collected soil from drapery fabrics quickly and effectively.

Drapery Pleat Vacuuming Tool part number 10-3600



Mini-Head Adapter

This specially designed kit is for use with some of Steam Way's hand-held cleaning tools. It transfers the solution hose inside the vacuum hose for less cumbersome operation. This provides for easier cleaning and eliminates the problems that can be caused by pressure hoses in direct contact with delicate fabrics.

Portable part number 10-9002 Truck Mount part number 10-9001

...Truck Mount Accessories



Aqua Filter In-Line Viewable Filter

One of the major requirements of proper wastewater handling is to filter out as much fuzz, lint, carpet fiber, and hair from your waste water before it returns to your waste water collection tank. The Aqua-filter provides you with an economical means to filter your waste water while allowing passersby to view the effectiveness of the cleaning process. A highly recommended add-on feature is the epoxy coated steel mesh filter for longer filter life and easier cleaning .

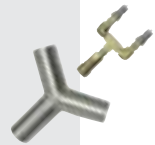
Aqua-Filter part number 4802650 Fiber Filter Mesh Bags part number 4802650-1
Epoxy Coated Steel Mesh Filter part number 4802650-2



Dual Wand Kit

A "Y" Kit to convert your truck mount into dual-wand capabilities. Because your truck mounts have tremendous power, high solution pressure, and vacuum suction, all it takes to convert your machine to dual wand cleaning is the "Y" Kit. The pressure "Y" can also be used to run a Magna-Bright® In-Line Pressure Sprayer and your scrub wand at the same time. For more information on the dual wand capabilities of your machine, contact Steam Way International or your local distributor. When ordering your "Y" Kit Conversion System, specify a 2" or 2 1/2" starting point.

Dual Wand Kit - 3/8" (Specify 2" or 2 1/2" Starting Point) part number 16-8001
Dual Wand Kit - 1/4" (Specify 2" or 2 1/2" Starting Point) part number 16-8002



Add-On Truck Mount Warm-Up Valve

Have you ever stood in front of your truck mount frustrated at your inability to use its power to produce hot water for more effective mixing of chemicals? This add-on truckmount warm-up valve serves two purposes: first, it gives you the ability to give your heater a chance to warm-up so you will have instant heat at the wand, and secondly, to give you hot water from your truck mount for rinse concentrate mixing and other uses. This efficient time-saving device will make your job easier. It will also allow you to relieve the pressure from the solution line from the truck.

part number 17-9015



Pollution Solution Waste Water Disposal System

Proper waste water disposal into the sanitary sewage treatment system is the right thing to do. The pollution solution can be mounted into any waste tank to properly pump waste water to an authorized receptacle. Unlike most other waste pumping systems, it operates while under a vacuum load and provides high volume waste water pumping. This small compact unit uses a stainless steel mesh filter to prevent clogging for constant operation. Switches for this system can be mounted on the front panel of your truck mount.

part number 4802675



Solution (Pressure) Hoses

Steam Way's Solution Pressure Hose is made exclusively for Steam Way. This high pressure hose has ratings up to 3000 P.S.I. pressure and 250°F temperature. The outside diameter of the hose is only slightly larger than conventional 1/4" hose but allows for better water flow for more efficient cleaning.

Part No. Hose With Quick Disconnects

3916425 Pressure Hose HV 25', 1/4" QD	3926425 Pressure Hose HV 25', 1/4" w/o QD's
3916450 Pressure Hose HV 50', 1/4" QD	3926450 Pressure Hose HV 50', 1/4" w/o QD's
3916625 Pressure Hose HV 25', 3/8" QD	
3916650 Pressure Hose HV 50', 3/8" QD	



Vacuum Hoses - Designed for high temperature waste water recovery

Vacuum Hose w/Cuffs (Orange & Black)

2", 50 ft. part number 3903250
2", 25 ft. part number 3903225
1-1/2", 50 ft. part number 3902450
1-1/2", 25 ft. part number 3902425

These heavy duty vacuum hoses will withstand the rigors of your daily cleaning and are specially manufactured for the truly hot water Steam Way truck mounts produce.



Custom Van Accessories...



ACCESSORIES

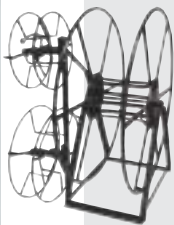
ACCESSORIES

Aqua Tank™ Fresh Water Holding-Tank And Chemical Rack



Aqua Tank™ Fresh Water Holding-Tank And Chemical Rack is the ideal van accessory for your cleaning and restoration business. It provides a convenient 100 gallons of fresh water at your fingertips, while at the same time maximizing van floor space by also serving as a chemical or accessory storage rack. The Aqua Tank™ is made of impact resistant, durable polyethylene that has the advantage of being heavy-duty, economical, and lightweight. It will not rust, dent, or corrode. No more looking for a water supply on the job and no worries about frozen water faucets or hoses in winter. The built-in chemical shelf holds up to 5 one gallon containers securely • Molded baffles inside tank decrease water movement while van is in motion • Automatic water fill shut-off. Translucent tank allows monitoring of water level • Designed to be easily mounted anywhere in the van. Convenient, multiple access ports ensure easy filling and draining of tank, no matter where it is mounted. Dimensions are 18" W x 36"H x 61"L • Easy to install. Comes with all mounting hardware and instructions. **part number 4802301**

Vacuum And Solution Hose Roll-Up Reels



These heavy-duty vacuum reels will conveniently store for easy roll-out and retrieval of vacuum hose. Just pull out and reel in. No mess, rolling up hoses, or storage problems. Allows you to use the space in your van most effectively. The vacuum hose reels are available with "live" hook-ups. Inquire for information about larger capacity reels.

Vacuum Hose Reel
250' - 2" Vac Hose Capacity
part number 4802500

Vacuum Hose Reel - "Live" Hook-Up
200' - 2" Vac Hose Capacity
part number 4802503

Pressure Hose Roll-Up Reels
Pressure Hose Reel - High Capacity
Free Standing

300' 1/4" Pressure Hose w/ Q.D.'s Capacity
200' 3/8" Pressure Hose w/Q.D.'s Capacity
150' 5/8" Garden Hose Capacity
part number 4802502

Pressure Hose Reel - High Capacity
Hooks onto 4802500 and 4802502
300' 1/4" Pressure Hose w/ Q.D.'s Capacity
200' 3/8" Pressure Hose w/ Q.D.'s Capacity
150' 5/8" Garden Hose Capacity
part number 4802501

Pressure Hose Reel - "Live" Hook-Up
300' 1/4" Pressure Hose w/Q.D.'s Capacity
200' 3/8" Pressure Hose w/Q.D.'s Capacity
150' 5/8" Garden Hose Capacity
part number 4802504

Pressure Hose Reel - Small Capacity
200' 1/4" Pressure Hose w/Q.D.'s
150' 5/8" Garden Hose Capacity
part number 4802499

These heavy-duty reels will conveniently store your pressure hose or garden hose. Different mounting alternatives are available.

100 Gallon Waste Water Collection Tank



Double reinforced seams and marine aluminum construction are standard on this large capacity optional 100 gallon waste recovery tank. Reinforced baffles prevent bowing and stretching for longer life. Larger capacity allows for less frequent waste water dumping.

part number 1909776 70 gallon part number 17-3001 50 gallon part number 1909770

Chemical Storage Rack



With today's diversified professional cleaner, space is at a premium in the van. The Steam Way Chemical Storage Rack is designed to fit any standard 1/2, 3/4 or full ton van. It will conveniently store and provide instant and easy access up to 20 chemicals. It keeps them from tipping over and cleans up your van's floor space. Manufactured with non-rust aluminum and painted with special epoxy-coated paint, it will make your van look more attractive and allow you to be more productive. **part number 4802510 (chemical solutions ordered separately)**

Fuel Tank Storage Rack



The fuel tank storage rack is designed to give you more floor space in your van, while also providing an added control and safety factor. The rack will provide you with easier access to your fuel tanks. Manufactured of marine aluminum and protected with an epoxy painted seal, the storage rack will add to your van aesthetics, and will provide maneuverability to your operations. Designed to be used with Steam Way truck mounts to store your kerosene and gasoline, they can easily be used with the fuel tanks that Steam Way provides. They will last for years and will provide you with a true benefit to help you organize your van and maximize your floor space. The top space on the storage rack can also be used to hold two five gallon jugs. **part number 4802520**

...Custom Van Accessories



Powerforce™ Waste Filtering And Disposal Systems

The POWERFORCE™ Waste Disposal System eliminates waste water disposal problems with an advanced technology in-line pumping system, which allows you to automatically pump your water back into the home or business, into an authorized receptacle to the sewage treatment system. This lightweight, but durable system has the power and filtering ability to effectively pump 95% of your waste water into an authorized receptacle. It will save you thousands of labor dollars in time saved emptying waste tanks. The POWERFORCE™ can be connected into any 2" vacuum line and works effectively with any truck mount. It will prolong waste tank and vacuum blower life and make clean-up easier. The POWERFORCE™ is manufactured with lightweight, durable aluminum. Two screen filters separate and filter waste water and lint to prevent clogging. You can now operate with peace of mind and know you are protecting the environment.

POWERFORCE™ Waste Disposal System part number 10-8105

POWERFORCE™ Filter System Only part number 10-8100



Machine Manual Storage Rack

You need instant access to safely maintenance, and operational procedures to your truck mount manual. Why not keep it right on the door by your truck mount? This rack protects your manual and prevents excuses about its being lost. Manufactured with high quality marine aluminum and protected with special epoxy coated paint. Mounting bolts and/or screws not included.

part number 2909892



Styrofoam Block Holder

Organize your van and provide quick easy access to your styrofoam blocks. This specially designed block holder can be mounted anywhere in your van and will assist in maximizing floor space. It neatly stores any size or density styrofoam blocks.

part number 4804504



Rinse Detergent Solution Jug Holder

No more spills and accidents. This holder will allow you to safely mount a standard five gallon (18.7 liter) solution cube that comes with most truck mounts in your vehicle. Mounting bolts and/or screws not included.

part number 2909893



Plastic Or Foil Tab Holder

Another excellent organizational tool for your van. This holder can be mounted anywhere in your van to store and provide easy access to 2" foil or plastic furniture tabs. Eliminates wasted tabs and maximizes van floor space.

part number 4804505



SELECTTEAM™ Unified Support Network...

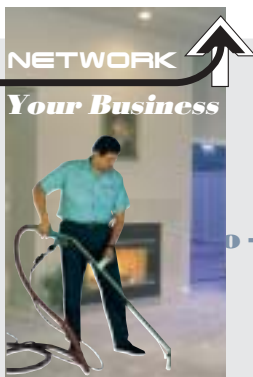


The Steam Way®

SELECTTEAM™ UNIFIED NETWORK

The Next Step Forward For Your Business

A business management, training, marketing, sales, presentation, and support program designed to help you profitably take your cleaning and restoration business through the next millennium.

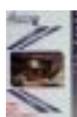


Here's What You'll Receive When You Join...

- Advertising Slicks, Scripts, Logos
- Samples Of Professionally Produced 4 Color Sales Brochures You Can Purchase
- SelectTeam Simple Yellow Page Ads
- National Image Recognition - Locally Owned, Nationally Supported
- Participation In The Steam Way® SelectTeam Referral Network - A Nationwide Referral Program For Consumers, Carpet Mills, Retailers And Insurance Adjuster
- Certificate Of Membership

All of these benefits are included in your comprehensive **FREE** membership notebook

Membership is **FREE** in the Steam Way® **SELECTTEAM™** Program - all you need is a Sponsoring Member or Steam Way® Distributor.



After-Care Procedures Card

A safety, precaution, and common sense reminder that is an absolute must to give to every carpet cleaning customer after the cleaning job is finished.

Part # 7121050 pack of 100 cards



Area Rug & Oriental Rug Cleaning Awareness Postcard

Make sure your customers and potential customers are aware that you are a trained expert in cleaning their fine investment textile rugs.

Part # 7121070 pack of 100 postcards



Reminder Postcard

Just like you get from the dentist! Remind your customer that it is time for them to get their carpets and upholstery cleaned again. A gentle reminder that most customers really appreciate.

Part # 7121060 pack of 100 postcards

Proven Color Sales Brochures You Can Purchase



Commercial Carpet Planned Maintenance Sales Brochure

A commercial carpet cleaning sales brochures that includes your role and your customer's role in a successful planned maintenance program. It includes steps for preventative maintenance and so control, interim appearance retention spotting and cleaning and restorative, deep cleaning high performance hot water extraction cleaning.

Part # 7142000 pack of 100 brochures



Protect Your Family - Cleaning For Health Sales Brochure

Explain to your customer the healthful benefits of maintaining professionally cleaned carpet and upholstery fabrics. Addressed are the cleaning method, environmentally preferred cleaning solutions, quality standards, government recommendations for cleaning frequency, and aftercare considerations. Poignant pictures help demonstrate the reasons. Part # 7125000 pack of 100 brochures



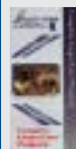
FabriCover® Fabric Stain And Soil Resistant Protection Sales Brochure

A brochure that clearly explains, sells, and demonstrates in pictures the benefits of having any of the three FABRICCOVER® Fabric Protection Products to their carpet and/or upholstery. Don't miss out on this profitable add-on that your customers want to buy. Part # 7127010 pack of 100 brochures



10 Benefits Of Truck Mounted Hot Water Extraction Carpet Cleaning

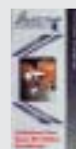
Our most popular sales brochure! A strongly worded and supported analysis of why truck mounted hot water extraction cleaning is the best way to clean a carpet. Convenience, recommendations, test results, texture refreshing, faster drying, investment extension, sanitizing cleaning, staying cleaner longer, and environmental impact are all discussed. Part # 7147000 pack of 100 brochures



Complete Carpet Care Sales Brochure

A thorough explanation of the professional carpet cleaning job. Included are explanations of preinspection, preconditioning, spot removal, furniture moving, extraction rinsing, grooming, and drying. This brochure separates you from the pack by defining exactly what the cleaning process should include.

Part # 7141000 pack of 100 brochures



Pet Odor Deodorization Sales Brochure

A consumer awareness sales brochure that explains the complexities of pet urine contamination and its effects on carpet and upholstery. Addressed are the three problems associated, reactivated odors, and the options for treatment programs. This brochure helps define for your customer why cleaning is only the first step in treatment. Part # 7148000 pack of 100 brochures



Door Hangers

Practice five around after every job! The most effective way to communicate in a non-obtrusive manner that you just had the pleasure of cleaning their neighbors house and you would like to have the opportunity clean theirs.

Part # 7146000 pack of 100 door hangers

Call your local Steam Way® Distributor, e-mail us at <steamway@steamway.com>, or call 1-800-447-8326 for your membership application form.

SELECTTEAM™ Unified Support Network



SELECTTEAM® MARKETING, MANAGEMENT, EDUCATIONAL & TRAINING MATERIALS

Business Forms Manual

How many times have you found yourself looking for the right business form, customized to a cleaning and restoration business. You could buy a generic form that doesn't fit your company or services. You could design your own and spend hours in front of a computer instead of selling. The best choice is to purchase this exhaustive manual of camera-ready business forms. Whether you use a couple of forms or all of them, there is a form you need in this manual. Whether you're relatively new in the business, or have been doing it for years, there are forms to use with your business. These attractive and professional forms are designed for you to copy and customize. Each one is a laser printed copy of the form and ready to use. Just add your name and logo (if preferred) and you're ready to work! Part # 7120990

Here's a list of what's included (new forms are added all the time):



- Employee/Employment Related Forms - Applications, Reference Checks (Business and personal), Harassment Policy, Interview Questions, Employment Agreement, and Performance Evaluations
- Cleaning Related Forms- Cleaning Estimate Sheet/Work Order, Carpet Cleaning Pre-Cleaning Prep, Carpet Cleaning Explanation, Residential Carpet Maintenance Contract, Certificate of Professional Cleaning, Commercial Carpet Cleaning Program, Upholstery Cleaning Pre-inspection and Condition Overview (waiver), Consumer Alert - Upholstery Care
- Restoration Related Forms - Water Damage Write-Up, Fire Damage Restoration Estimate, Restoration Authorization, Contractor's Affidavit, Customer Certificate of Completion, Affidavit, Mortgage Notification, Acknowledgment of Risks and Release, Inspection Report, Water Damage Customer Info
- Management Forms - Customer Complaint Follow-up, Writing A Business Plan, Equipment Maintenance Checklist

Truck or Window Decal

This 8-1/2" x 18" 2 Color Decal is printed on a high quality clear decal material to weather indoor or outdoor environmental conditions. You can demonstrate to your community your participation in the SelectTeam® program. Locally owned, nationally supported. Part # 7423000



Carpet Cleaning Methods Training Video

This 33 minute video educates the viewer about the basics of cleaning chemistry, and how they are applied to all 5 major carpet cleaning methods. You will see and understand how each method works, with special sections updating the very latest in technology and innovation. See the following five methods in action:



Part Number: 7910000

1. Hot Water Extraction
2. Spin Bonnet/Absorbent Pad
3. Rotary Shampoo/Rotary Shampoo Extraction
4. Absorbent Compound/Dry Powder Extraction
5. Dry Foam Shampoo/Dry Foam Extraction

Carpet Cleaning Basics CD-ROM Training Program



Designed to bridge the training gap for a newly hired technician to help them learn the basics of carpet and carpet cleaning until they have the opportunity to attend a certification class...Perfect for new businesses, too!

Part #7468025

- Inexpensive, Repeatable Learning
- Training Manual To Guide The Way
- Flexible
- IICRC Continuing Education Credits Available
- Great Preparation Study For Advanced Certification Classes
- CD-ROM Based Computer Training Works With Almost Any Windows® Based Computer

Steam Way® Resource Guide and Cleaning and Restoration Procedures Guidelines



A complete computer resource library of information vital to your company. If you are using Steam Way cleaning and restoration products, you'll find practical help on compliance, cleaning and restoration procedures, and more. Add to that a library of how to for carpet cleaning, ceiling cleaning, upholstery cleaning, water damage restoration, fire damage restoration, ceiling cleaning that you

Part #7468027

- Cleaning & Restoration Procedures Library
- Equipment Video catalog
- Chemical Video Catalog
- MSDS for all Steam Way's Chemicals
- Use and Application Information for all of Steam Way's Chemicals
- 10 Years of Technical Bulletin Updates covering all aspects of cleaning and restoration

Stain Treatment & Removal Guidelines CD-ROM



A step by step picture filled presentation on the exact procedures for removing the most troubling and stubborn stains without having to use dangerous irons and messy absorbent towels. You'll also get a step-by-step procedures guide for removing the most common spots from carpet and upholstery.

Part #7468029

- Inexpensive, Repeatable Learning
- Works with Windows® or Mac® Computers
- Train new technicians when they join the company
- Flexible
- See the latest in product technology
- Great Preparation Study For Advanced Certification Classes
- CD-ROM Based Computer Training



"Over the years there are a few companies that I can single out as contributing above and beyond what is expected in the carpet cleaning world. Steam Way has always been a leader in equipment and chemical manufacturing, but your company was one of the first to step beyond manufacturing to really honing in on how to help cleaners and restorers become more successful. You have some of the best instructors in the industry in your schools, and with the SELECTTEAM program, you cover everything technical as well as all the other pieces of the business that are just as important. You don't just teach them how to clean better - but how to also bring in the kind of customers and systems they need to build a thriving company."
Joe Polish, Piranha Marketing, Tempe, Arizona

IICRC Certification Schools...

THE STEAM WAY® TECHNICAL TRAINING SCHOOL HAS CERTIFIED MORE CLEANING AND RESTORATION TECHNICIANS THAN ANY COMPANY, SCHOOL OR ORGANIZATION

OVER 120 SCHOOLS ARE SCHEDULED EACH YEAR!

The Industry's Best Instructors!

How You Will Learn

- Informative Class Room Style Presentation
- Comprehensive Audio-Visual Reinforcement
 - Computer Presentation - Powerpoint®
 - Videos - Slides - Diagrams - Example
- Product Application Training
 - See - Feel - Participate - Involve
 - No Matter What Brand Of Products You Use
- Questions And Answers
- Networking With Fellow Class Members



Technical Certification Training Courses

- Complete Carpet Care (CCT)
- Commercial Carpet Maintenance Specialist (CCMT)
- Complete Upholstery, Fabric & Leather Cleaning (UFT)
- Deodorization & Odor Control (OCT)
- Comprehensive Water Damage Restoration (WRT)
- Advanced Structural Drying (ASD)*
- Mold Remediation Technician (MRT)*
- Color Repair Technician (CRT)*
- Carpet Repair & Reinstallation (RRT)
- Hard Surface Floor Maintenance Specialist (FCT)

Advanced Designation Training Courses

- Advanced Spot & Stain Removal (ASR)
- Oriental & Area Rug Cleaning (ORC)
- Carpet Assessor/Corrector Specialist (CACS)
- Building Blocks To A Better Business (BBB)

Steam Way® Instructors: Doyle Bloss, Shawn Bisaillon, Tom Hill, Dan Bernazzani, Dane Gregory, Barry Costa, Ron Curtis, Rick Love, Joe Arrigo, Joey Pickett, Joe Dobbins, Paul Pearce, John Hickey, Grant Hickey, Brian Clarke.

For A Complete Schedule Of Upcoming Steam Way® Schools That Are Approved For IICRC Certification or Continuing Education Credits, Call Your Local Steam Way® Distributor,

Log Onto www.steamway.com,

E-mail Us At

<steamway@steamway.com>,

Or Call **1-800-447-8326**.



"Steam Way has been a strong supporter of the IICRC for many years and in many ways. The Steam Way Technical Training School consistently certifies more cleaners and restorers than anyone else year after year. The IICRC would not be the organization it is today without the support of companies like Steam Way International."

Tom Hill
IICRC Executive
Administrator
Vancouver, WA

*** - Schools Taught By Affiliated Approved School**

Innovative Practical Solutions With A Proven Track Record!

...Product Application Training

SOLUTIONSFEST™ / TECHZONE TRAINING

Problem/Challenge + Steam Way = Money Making \$olution

TECHZONE CUSTOMER CARE SPECIALIST TRAINING

1. Guerilla Real World Carpet Cleaning - What HWE Systems Work Most Effectively
2. Commercial Carpet Cleaning - Speed Cleaning Strategies and The Mist and Brush Carpet Cleaning System
3. Understanding Fabric Protectors - The Best Ways To Sell Them
4. New Developments in Pet Odor and Urine Problem Solving Solutions
5. New Concepts and Chemistry for Stain Treatment and Removal
6. Simple Solutions To Complex Upholstery Cleaning Problems
7. Residential Wood Floor Care
8. Hard Surface Floor Cleaning - VCT, Stone, Concrete Ceramic Tile and Grout, Marble, Terrazzo and More



SOLUTIONSFEST™ AGENDA

1 **TECHZONE CUSTOMER CARE TRAINING**
Hands-On Problem Solving, Money Making Product Application Training

2 **FUNZONE PRODUCT PLAYGROUND**
You'll have a chance to see live demonstrations and participate first hand using the latest tools, chemicals, and procedures in • Stain Treatment • Upholstery Cleaning • Mist and Brush Cleaning • Wood Floor Care • Pet Odor Deodorization • Mold Sanitization • and More

3 **LUNCH OR DINNER WITH THE BIG KAHUNA**
An informal meal with your True Blue Training Crew Instructor. Open question and answer period. Your meal will be provided by the host distributor.

4 **TECHZONE CUSTOMER CARE TRAINING**
Virtual reality hands-on application training virtually FREE.

You can earn **IICRC Continuing Education Credit** by attending a **SOLUTIONSFEST™**.



The **SOLUTIONSFEST** is an event unlike the industry has ever seen. Virtual reality hands-on product application training is virtually FREE after you receive your special attendee coupon that allows you to take home the problem solving products being demonstrated. No theory here! This program focuses on showing you how to solve problems and make more money. Just a fun time of camaraderie and learning!



The True Blue Training Crew

Your instructor will be the newest faces on the teaching scene. Specially selected and trained cleaning and restoration professionals who are actively involved in the day-to-day operations of successful cleaning and restoration businesses. They are using the equipment and chemicals they will be teaching you about to solve problems and make more money. They are ready to show you the specific equipment chemicals, and procedures you need to solve your challenge.



Coming To Your Area...

Call your local Steam Way® Distributor for **SOLUTIONSFEST** events coming to your area. For a list of events happening in the United States, Canada, United Kingdom and Australia, log onto www.steamway.com, or call **1-800-447-8326**.

Product Application Guide...

RESIDENTIAL CARPET CLEANING

1. For Cleaning Nylon and Polyester Carpets

Prespray -

Mix 1 part **MAXPAK TRAFFIC LANE CLEANER** to 32 - 64 parts water.

Extraction Rinse

Portable -

For Acid Rinse, mix 2 ounces of **FIBER REFRESH** with 5 gallons of water.
For Alkaline Rinse, mix 2 ounces of **RINSE SURFACTANT 2000** with 5 gallons of water.

TruckMount -

For Acid Rinse, mix 32 ounces of **FIBER REFRESH** with 5 gallons of water.
For Alkaline Rinse, mix 32 ounces of **RINSE SURFACTANT 2000** with 5 gallons of water.

2. For Cleaning Olefin, Olefin Blend, Olefin Berber Carpets

Prespray -

Mix 1 part **OLEFIN PLUS PRECONDITIONER** with 12 parts water.

Extraction Rinse

Portable - Mix 2 ounces of **FIBER REFRESH** with 5 gallons of water.

TruckMount - Mix 32 ounces of **FIBER REFRESH** with 5 gallons of water.

3. For Cleaning Wool, Wool Berbers, Light Colored Carpets, Potential "Browners"

Prespray -

Mix 1 part **FORMULA "O" FABRIC PRECONDITIONER** with 12 parts water.

Extraction Rinse

Portable - Mix 2 ounces of **FIBER REFRESH** with 5 gallons of water.

TruckMount - Mix 32 ounces of **FIBER REFRESH** with 5 gallons of water.

4. For Cleaning Colorfast, Natural Fabric Oriental Rugs & Area Rugs

Prespray -

Mix 1 part **COTTON & WOOL PRESPRAY** with 8 parts water. For heavily soiled areas, apply **FINE FABRIC DETERGENT** by mixing 1 part solution with 8 parts water. Agitate in with groomer, rake or brush.

Extraction Rinse

Portable - Mix 2 ounces of **FIBER REFRESH** with 5 gallons of water.

TruckMount - Mix 32 ounces of **FIBER REFRESH** with 5 gallons of water.

Quick-Tip

For Carpets Exposed To Oxidized Oils, Asphalt Oil Tracking, Soil Based Yellowing, & Build-Up Of Ice Melt Compounds

For boosting cleaning power and stripping oxidized oils off the carpet, mix one powder ounce of **FORMULA "OBB"** with each mixed gallon of **MAXPAK**, **MAXPAK NBF**, **OLEFIN PLUS**, or **FORMULA "O"**



FORMULA "OBB"

Options



MAXPAK NBF TLC
Use in chemically sensitive, low VOC or non-butyl environments.



ENZYME TLC
Use for build-up of food based grease and oil in restaurant environments.



FABRICOVER PLUS
High performance oil and water based stain repellency and soil resistancy.

COMMERCIAL CARPET CLEANING

1. For Cleaning Nylon Carpets and Carpet Tiles

Prespray -

Mix 1 part **MAXPAK TRAFFIC LANE CLEANER** to 32 - 64 parts water.

Extraction Rinse

Portable - Mix 2 ounces of **EXTRACTION POWER HP** with 5 gallons of water.

TruckMount - Mix 32 ounces of **EXTRACTION POWER HP** with 5 gallons of water.

2. For Cleaning Wool Carpets With Synthetic Backing

Prespray -

Mix 1 part **FORMULA "O" FABRIC PRECONDITIONER** with 12 parts water.

Extraction Rinse

Portable - Mix 2 ounces of **FIBER REFRESH** with 5 gallons of water.

TruckMount - Mix 32 ounces of **FIBER REFRESH** with 5 gallons of water.

3. For Cleaning Olefin Carpets, Carpets Exposed To Severe Oil Tracking Contamination

Prespray -

Mix 1 part **OLEFIN PLUS TRAFFIC LANE CLEANER** with 12 parts water. Add 1 powder ounce of **FORMULA "OBB"** with each mixed gallon of preconditioner.

Extraction Rinse

Portable - Mix 2 ounces of **EXTRACTION POWER HP** with 5 gallons of water.

TruckMount - Mix 32 ounces of **EXTRACTION POWER HP** with 5 gallons of water.

1. Mist and Brush Appearance Retention Cleaning

Mix 1 part **MIST-AND-BRUSH** with 16 parts water into sprayer or automatic dispenser. Apply as a mist in overlapping pattern. Use more solution only in heavily soiled areas. Agitate into carpet with **MIST-AND-BRUSH MAINTAINER** (or other counter rotating cylindrical brush machine). Allow solution to completely dry. Follow with thorough dry vacuuming with commercial vacuum.

Quick-Tip

Features Of The Mist And Brush System



- Cleaning Rates up to 3000 square feet per hour
- Safer agitation than bonnet cleaning or a rotary brush
- Non resoiling encapsulation formula
- Faster drying

Options



BONNET SCRUB
For interim, appearance retention cleaning. Utilizing the bonnet cleaning method.



CARPET AND UPHOLSTERY SHAMPOO
For rotary or dry foam shampoo extraction systems. For interim cleaning



ENZYME TLC
Use this preconditioner where buildup of food based grease and oil contamination.



MAXPAK NBF
Use in chemically sensitive, low VOC, or non-butyl environments.

...Product Application Guide

FABRIC PROTECTION

1. Maximum Water and Oil Based Stain & Soil Protection For Synthetic and Wool Carpeting

Mix 1 part **FABRICCOVER PLUS** with 4 parts water. Apply in even overlapping passes with pump-up pressure sprayer, electric sprayer or in-line sprayer. Coverage will be 400 square feet per mixed gallon on most carpeting. For heavy-weight, high pile, plush style carpets (berbers, "cut" berbers, plush cut-piles) coverage will be 200 square feet per mixed gallon. For low level loop glue down commercial carpets, coverage will be 600 - 800 square feet per mixed gallon. For best results, distribute and agitate with grooming rake or brush. Accelerate drying with air mover.

2. Stain & Soil Protection For Natural Fabric Upholstery & Area Rugs

Use **FABRICCOVER II** straight. Product is ready-to-use. Apply using hand-held pump or pressure sprayer. Do not allow customers into spray area during application, and for 2 - 4 hours following treatment. Spray evenly in overlapping pattern until fabric is damp to the touch. Coverage will vary due to fabric, weight and texture. 1 pint (16 ounces) will treat an average 6 to 8 foot sofa or couch. 2 ounces of solution per square yard of upholstery would be normal coverage. Coverage for carpet and draperies would be 1000 - 2000 square feet per gallon depending upon weight, density and pile height of fabric. Allow 2 - 4 hours of drying time for best results.

3. Restoring Complete Dyeblocker Protection To Water Damaged Nylon Carpet/Converting Non-Stain Resistant Nylon To Stain Resistant

Mix 1 part **FABRICCOVER GOLD** with 1 part water. Apply in even, overlapping passes with pump-up pressure sprayer, electric sprayer, or in-line sprayer. Coverage will be approximately 400 square feet per mixed gallon on most carpeting. For heavy weight high pile, plush style carpets (berbers, "cut" berbers, plush cut piles), coverage will be 200 square feet per mixed gallon. For best results, distribute and agitate with grooming rake or brush. Accelerate drying with air mover.

Options



TEFLON® ADVANCED

Fluorochemical water and oil based stain repellency and soil protection from DuPont. (See page 39 for more information and promotional materials.)

Marketing Helps



FABRICCOVER TRUCK OR WINDOW DECAL (4" x 6")

Communicates your company as an authorized applicator.
part # 7420210



DEMO BLOTTERS

This cardboard demo blotter is treated on one side to help you demonstrate the protection provided.
part # 7420206 / 100 per pack



FABRICCOVER SALES BROCHURE

Four color sales brochures explains benefits to customers.
part # 7127010 / 100 per pack



FABRICCOVER SALES VIDEO

4 minute consumer sales video explains FabriCover benefits.
part # 7960000



FABRICCOVER SALES TIP CARD

Helps you explain benefits and close the sale.
part # 7177011



FABRICCOVER ARM PATCH

Communicates your company on an authorized applicator.
part # 7501000

UPHOLSTERY CLEANING

1. For Cleaning Synthetic, Fabric Durable Weave Upholstery

Prespray -

Use **UPHOLSTERY PRESPRAY** straight. Lightly mist into fabric. If you prefer a non-ammoniated prespray, mix 1 part **FORMULA "O"** with 12 parts water.

Extraction Rinse

Portable - Mix 2 ounces of **FORMULA "D" FINE FABRIC RINSE** with 5 gallons of water.

TruckMount - Mix 32 ounces of **FORMULA "D" FINE FABRIC RINSE** with 5 gallons of water.

2. For Cleaning Refined Cottons, Wool, Linen, Rayon, Cotton Blends, Delicate Weaves

Prespray -

Mix 1 part **COTTON & WOOL PRESPRAY** with 8 parts water.

Extraction Rinse

Portable - Mix 2 ounces of **FORMULA "D" FINE FABRIC RINSE** with 5 gallons of water.

TruckMount - Mix 32 ounces of **FORMULA "D" FINE FABRIC RINSE** with 5 gallons of water.

3. For Cleaning Haitian Cotton, Unrefined Cottons, "Brownable" Fabrics, Colorfast Jacquard Weaves

Prespray -

Mix 1 part **COTTON & WOOL PRESPRAY** with 8 parts water. Add 1 powder ounce of **SPOTTER RB** to each mixed gallon of **COTTON & WOOL PRESPRAY**.

Extraction Rinse

Portable - Mix two ounces of **FORMULA "D" FINE FABRIC RINSE** with 5 gallons of water.

TruckMount - Mix 32 ounces of **FORMULA "D" FINE FABRIC RINSE** with 5 gallons of water.

Helpful Tips For Upholstery Cleaning

- All upholstery should be thoroughly tested and evaluated prior to cleaning.
- Presprays should be agitated into the fabric with a horsehair brush or hand bonnet mitt.
- Allow prespray adequate dwell time on fabric (5 -10 minutes) prior to extraction, but do not allow to dry.
- A velvet carding brush should be used to prepare the nap overall on velvet upholstery; before, during and after cleaning. A velvet fluffing brush may be used to set the lay of the velvet nap after drying.
- A post-cleaning mist treatment of **FORMULA "D"** mixed 1 ounce to a gallon of water onto freshly cleaned fabrics can help stabilize fugitive dyes and prevent browning and yellowing.

Options



UPHOLSTERY/ DRAPERY DRY CLEANING SOLUTION
For dry cleaning non-colorfast dry-clean only fabrics.



FINE FABRIC DETERGENT
For low moisture foam cleaning of potential bleeders.



FABRICCOVER II
Apply this solvent based fluorochemical stain and soil protector for the complete upholstery cleaning job.

Product Application Guide...

PET ODOR DEODORIZATION

1. Top Only Treatment - When It's Part Of The Cleaning Job

1. Mix 1 part **FIRST RESPONSE DEODORIZER** with 4 - 8 parts water.
2. Apply solution (saturate spray) to contaminated area thoroughly. Allow to dwell 10 -20 minutes.
3. Rinse/extract solution out.
4. Proceed to clean carpet in normal manner.

2. Top Only Treatment - Encapsulation With Solution Injection System

1. Saturate spray contaminated area and inject contaminated area with **URINE PRETREATMENT - SPOTTER 601** straight. Allow to dwell 2 - 5 minutes. Rinse/extract thoroughly.
2. Saturate spray contaminated area and inject contaminated area with **ONSLAUGHT PET ODOR DEODORIZER**, mixed 1 part chemical to 4 parts water. Make sure solution comes in contact with all contaminated areas. Allow 10 -20 minutes dwell time.
3. Rinse/extract area thoroughly.

3. Maximum Treatment Program For Severe Contamination

1. Disengage entire room of carpet or entire carpet.
2. Dispose of padding. Replace tackstrip where necessary.
3. Clean and seal subfloor.
4. Saturate spray contaminated areas (front and back of the carpet) with **SPOTTER 601** straight. Allow to dwell 2 - 5 minutes. Rinse/extract area thoroughly.
5. Mix 1 part **ENZ-ODOR III** with 2 parts water. Saturate contaminated area thoroughly.
6. Allow 20 minutes to 24 hours dwell time. Do not allow solution to dry.
7. Rinse/extract area thoroughly.

4. To Eliminate Residual Discoloration Left By Urine

1. Test carpet for colorfastness prior to using.
2. Apply **STAIN SUBTRACTOR KIT STAIN TREATMENT SOLUTION A** straight to contaminated area by lightly misting.
3. Rinse/extract area thoroughly.

Options



WATER CLAW STAIN REMOVER

For deep removal of contamination as well as deodorizing treatments.
part # AC012



MSD EXTRA EPA REGISTERED CARPET SANITIZER

For severe contamination and antimicrobial/biocide action.
part # 9471000/gal
part # 9474000/case



ONSLAUGHT PLUS PET ODOR DEODORIZER

If pet is likely to return to spot, sell client an ongoing treatment program with consumer version of Onslaught.
part # 9520022



CARPET SYRINGE

For quick injection of solution into backing and padding.
part # 4806143



INJECTIMATE

For injection of large areas into backing and padding.
part # HFAC13



URINE DETECTION BLACK LIGHT

For contaminated area identification.
part # 4804204

Spotting Flowchart

START → **1. Inspect to determine the source of the spot** ↓

2. Test the fabric being spotted with all spotting solutions that may be used for colorfastness before use

↓ **3. Remove excess material**

- A. In the case of a liquid spill, blot up as much of the spill as possible with a clean, white absorbent towel or extract the area with your extraction machine.
- B. In the case of a hardened or dried spill or a solid material spill, remove as much of the encrusted material as possible. Thoroughly dry vacuum the area before proceeding to spotting.

↓ **4. Apply FIRST ACTION SPOTTER**

(If spot is gum, rust, or oil based skip to step 5)

- A. Apply the solution directly to the affected area sparingly.
- B. Agitate the spot and your spotting solution with your spotting spatula. Work from the outside of the spot toward the middle.
- C. Tamp the spotting solution (never rub) into the fibers using a tamping brush and a clean, absorbent white towel.
- D. Extract or blot the affected area to remove the spot and the spotting solution

↓ **5. Inspect for effectiveness of removal procedure.**

- A. If spot is removed, **STOP!**
- B. If further action is needed, proceed to one of the next five steps based upon the source of the spot (**5C1, 5C2, 5C3, 5C4 or 5C5**)

5C1 If spot is not removed and the spill is a common food or beverage from a plant source, proceed to directions for applying

SPOTTER 601

1. Apply the solution directly to the affected area sparingly.
2. Agitate the spot and your spotting solution with your spotting spatula. Work from the outside of the spot toward the middle.
3. Tamp the spotting solution into the fibers using a tamping brush and a clean, absorbent white towel
4. Allow the solution to dwell for 2-3 minutes.
5. Extract or rinse and blot the affected area to remove the spot and the spotting solution.
6. If discoloration remains, proceed to next step 6 only with the permission of the customer and your supervisor.

5C2 If spot is not removed and the spill is a protein spill such as blood or is a common household food or beverage derived from an animal source, proceed to directions for applying

SPOTTER 501

1. Apply the solution directly to the affected area sparingly.
2. Agitate the spot and your spotting solution with your spotting spatula Work from the outside of the spot toward the middle.
3. Tamp the spotting solution into the fibers using a tamping brush and a clean, absorbent white towel
4. Allow the solution to dwell for 2-3 minutes.
5. Extract or rinse and blot the affected area to remove the spot and the spotting solution.
6. If discoloration remains, proceed to step 6 only with the permission of the customer and your supervisor.

...Product Application Guide

Spotting Flowchart

5C3 If the spot is gum, proceed to directions for applying

SPOTTER CGS

1. Shake the gel well before using. Apply the gel sparingly to the top of the chewing gum.
2. Allow the solution to dwell for 2-3 minutes.
3. Agitate the gum with your spotting spatula. Remove as much gum as possible.
4. Repeat procedure if necessary.
5. If spot is removed, **STOP!**
6. If gum residue remains, apply SPOTTER 301 according to directions.
7. **STOP!**

5C4 If spot is rust, proceed to directions for applying

RUST REMOVER or RUST SUBTRACTOR

1. If using RUST REMOVER, wear protective rubber gloves and splash goggles.
2. Apply the solution directly to the affected area sparingly.
3. If necessary, agitate the solution and the spot with your spotting spatula. Work from the outside of the spot toward the middle.
4. If necessary, tamp the spotting solution with a spotting brush and an absorbent white cotton towel.
5. Allow the solution to dwell for 2-3 minutes
6. Extract and rinse and blot the affected area to remove the spot and the spotting solution.
7. **STOP!**

5C5 If the spot or spill is oil or grease based, proceed to directions for applying the

SPOTTER 301

1. Apply the solution to a spotting towel and apply the towel to the affected area.
2. Agitate the spot and your spotting solution with your spotting spatula. Work from the outside of the spot toward the middle.
3. Tamp the spotting solution (never rub) into the fibers using a tamping brush and a clean, absorbent white towel.
4. Allow the solution to dwell for 2-3 minutes.
5. Extract or rinse and blot the affected area to remove the spot and the spotting solution.
6. If these procedures are ineffective, please proceed to directions for applying SPOTTER 701.

SPOTTER 701

1. Apply the solution to a spotting towel and apply the towel to the affected area.
2. Agitate the spot and your spotting solution with your spotting spatula. Work from the outside of the spot toward the middle.
3. Tamp the spotting solution (never rub) into the fibers using a tamping brush and a clean, absorbent white towel.
4. Allow the solution to dwell for 2-3 minutes.
5. Be careful not to overapply too much spotting solution.
6. Once spot is removed, rinse area with SPOTTER 301 to remove spot and spotting solution. If you neglect this step, this area will likely resoil rapidly.
7. If discoloration remains, proceed to step 6C only with the permission of the customer, carpet owner, and your supervisor.

↴ **6.** If discoloration remains, consider proceeding to stain treatment steps - **THE STAIN ZONE™!**

6A If spot is not removed and the stain is caused by coffee or tea, apply

SPOTTER RB

1. Pretest fabric to determine colorfastness.
2. Mix one powder ounce of powder with 32 ounces hot water. Shake vigorously.
3. Apply with trigger sprayer by lightly misting on the area to be treated.
4. Allow 5-10 minutes of dwell time.
5. Extract or rinse the affected area.
6. If stain treatment is successful, allow affected area to dry and for best results dry vacuum up powder residue.
7. If these procedures are ineffective, consult with supervisor. Proceed to step 6B only with permission of customer/carpet owner. ↴

6B If spot is not removed and the stain is caused by a food or beverage source (excluding mustard and herbal teas)

RED SUBTRACTOR KIT

1. Pretest fabric to determine colorfastness.
2. Mix one powder ounce of Stain treatment powder A with 2 ounces of Stain treatment solution B with 32 ounces hot water) Shake vigorously.
3. Apply with trigger sprayer by saturating the area to be treated.
4. Apply live steam from steam generator
5. Allow 2-10 minutes dwell time. Check area periodically.
6. Extract or rinse the affected area.
7. Repeat steps if necessary.
8. **STOP!**

6C If spot is not removed and the stain is caused by something other than a food or beverage source (but including mustard and herbal teas)

STAIN SUBTRACTOR KIT

1. Pretest fabric to determine colorfastness.
 2. Mix one part Stain Treatment Liquid A (Activator Solution) with one part Stain Treatment Liquid B (Spotter 501) in a trigger sprayer.
 3. Apply with trigger sprayer by saturating the area to be treated.
 4. Apply live steam from steam generator
 5. Allow 2-10 minutes dwell time. For mustard, allow black light to shine directly on affected area overnight.
 6. Extract or rinse the affected area.
 7. Repeat steps if necessary.
- STOP!**

Carpet Cleaning Preconditioners, Traffic Lane Cleaners



MAXPAK™ TRAFFIC LANE CLEANER

This ultra-concentrated prespray (1:32-64) can safely and effectively clean all types of synthetic carpet, including stain resist, when used according to directions. Formulated from extensive laboratory and field testing to do the best job of cleaning, to not cause resoiling, and to keep carpets cleaner longer.

Recommended Applications

Heavy Soiling - Residential - Stain Resist
Heavy Soiling - Commercial
Normal Soiling - Commercial

Approved Applications

Normal Soiling - Residential - Stain Resist
Olefin or Polyester - Residential
Commercial Olefin
Commercial Restaurant and Food Service

General Usage

Truck Mount: 1:32 - 64
Portable: 1:32 - 64

pH

Concentrated 10.0 - 10.5
Ready To Use 9.5 - 10.5

Part Number

8931000 - Gallons 8934000 - 4 Gallon Cases
8935000 - 5 Gallons 8935500 - 55 Gallons



MAXPAK™ NBF

This high powered alkaline preconditioning agent can be used on all types of synthetic carpet and the most heavily soiling carpeting. Maxpak NBF is specially formulated for sensitive environments and people because it is a butyl free low VOC compound.

Recommended Applications

Heavy Soiling - Residential - Stain Resist
Heavy Soiling - Commercial
Normal Soiling - Commercial

Approved Applications

Normal Soiling - Residential - Stain Resist
Olefin or Polyester - Residential
Commercial Olefin
Commercial Restaurant and Food Service

General Usage

Truck Mount: 1:32 - 64
Portable: 1:32 - 64

pH

Concentrated 10.0 - 10.5
Ready To Use 9.5 - 10.5

Part Number

8940010 - Pints 8941000 - Gallons 8944000 - 4 Gal. Cases
8945000 - 5 Gallons 8945500 - 55 Gallons



SUPER TRAFFIC LANE CLEANER

Its aggressive action against problem soiling will clean the dirtiest of carpets in one wand pass. Its ultra-concentrated formula (1:12-24) will save you money. The most popular cleaning solution that we manufacture. A tried and true favorite for "real-world" cleaning of exceptionally soiled carpets.

Recommended Applications

Olefin or Polyester - Residential
Heavy Soiling - Commercial
Commercial Restaurant and Food Service

Approved Applications

Heavy Soiling - Residential - Stain Resist
Normal Soiling - Commercial

General Usage

Truck Mount: 1:12 - 24
Portable: 1:12 - 24

pH

Concentrated 11.0 - 12.0
Ready To Use 10.5 - 11.5

Part Number

9031000 - Gallons 9034000 - 4 Gallon Cases
9035000 - 5 Gallons 9035500 - 55 Gallons



ENZYME TLC

A powerful powder preconditioning agent with blended enzymes for dissolving abusive grease and oil build-up in synthetic carpeting. The ideal prespray for many restaurants and other commercial carpets where the carpet is exposed to massive amounts of grease and oil based soiling. It's now easier to dissolve formula is also economical because it is a powder cleaning agent.

Recommended Applications

Olefin or Polyester - Residential
Heavy Soiling - Commercial
Commercial Restaurant and Food Service

Approved Applications

Normal Soiling - Commercial



General Usage

Truck Mount: 3 oz/Gallon
Portable: 3 oz/Gallon

pH

Concentrated 11.0 - 12.0
Ready To Use 10.5 - 11.5

Part Number

9020008 - 8# Jars 9024008 - Cases of 8# Jars
9020500 - 40 # Drum

Carpet Cleaning, Preconditioners, Traffic Lane Cleaners

SPECTRUM TLC



A totally new hi-tech synergistic approach to cleaning chemistry. A unique mixture of citrus solvents and fast acting enzymes make this the true one-traffic-lane-cleaner for all synthetic carpets. The perfect solution for residential carpets where you need the cleaning power of enzymes and citrus solvents in a lower pH cleaning solution.

Recommended Applications

Normal Soiling - Residential - Stain Resist
Heavy Soiling - Residential - Stain Resist
Olefin or Polyester - Residential

Normal Soiling - Commercial

Heavy Soiling - Commercial

Approved Applications

Commercial Olefin
Commercial Restaurant and Food Service

General Usage

Truck Mount: 1:8 - 12
Portable: 1:8 - 12

pH

Concentrated 9.0 - 9.8
Ready To Use 8.5 - 9.5

Part Number

9111000 - Gallons 9114000 - 4 Gallon Cases
9115000 - 5 Gallons 9115500 - 55 Gallons

OLEFIN PLUS TLC



A specially formulated solution to meet the exacting requirements for cleaning heavily soiled olefin carpeting. You can restore the appearance level of most lightly colored olefin carpets with this solution, including olefin berbers. It's synergistic blend of specialized surfactants penetrates that water repelling characteristic of olefin for more effective removal of ground-in soiling.

Recommended Applications

Olefin or Polyester - Residential and Commercial
Commercial Restaurant and Food Service

Approved Applications

Normal Soiling - Residential - Stain Resist
Heavy Soiling - Residential - Stain Resist

General Usage

Truck Mount: 1:12 - 24
Portable: 1:12 - 24

pH

Concentrated 10.0 - 11.0
Ready To Use 9.0 - 10.0

Part Number

8901000 - Gallons 8904000 - 4 Gallon Cases
8905000 - 5 Gallons 8905500 - 55 Gallons

FORMULA "O" FABRIC PRECONDITIONER



The original citrus solvent prespray. The fast acting, environmentally friendly formula dissolves greases and oils, while maintaining a pH level safe enough for all synthetics and most wool carpets. It is effective even on intensely soiled carpeting, due to the unique blend of surfactants and citrus solvents. A favorite of cleaners for its effectiveness and of consumers for its refreshing fragrance.

Recommended Applications

Normal Soiling - Residential - Stain Resist
Wool Carpet
Normal Soiling - Commercial

Approved Applications

Heavy Soiling - Residential - Stain Resist
Olefin or Polyester - Residential
Heavy Soiling - Commercial
Commercial Restaurant and Food Service

General Usage

Truck Mount: 1:8 - 12
Portable: 1:8 - 12

pH

Concentrated 8.5 - 9.0
Ready To Use 8.0 - 8.5

Part Number

9161000 - Gallons 9164000 - 4 Gallon Cases
9165000 - 5 Gallons 9165500 - 55 Gallons

COTTON & WOOL PRESPRAY



This neutral prespray is a solvent-free formulation for cleaning delicate wool carpeting and natural fabric upholstery. It will safely and effectively allow you to clean cotton and wool carpeting, while special additives help prevent cleaning related problems. It does not have the obnoxious odor normally associated with cotton cleaning agents and shampoo. Can be mixed with Spotter "RB" for Haitian Cotton Cleaning.

Recommended Applications

Normal Soiling - Residential - Stain Resist
Wool Carpets

Approved Applications

Heavy Soiling - Residential - Stain Resist
Olefin or Polyester - Residential
Heavy Soiling - Commercial

General Usage

Truck Mount: 1:8
Portable: 1:8

pH

Concentrated 6.5
Ready To Use 6.5 - 7.0

Part Number

9061000 - Gallons 9064000 - 4 Gallon Cases
9065000 - 55 Gallons

Carpet Extraction Detergents, Acid Rinse Detergents

RINSING AGENTS

CHEMICALS



EXTRACTIONPOWER HP

A liquid alkaline carpet extraction detergent rinse for severely soiled synthetic carpets when that "extra punch" is needed. This low residue rinse contains corrosion inhibitors to protect your equipment. The liquid formulation allows for ease of mixing. Its new and improved formula works even more effectively on severely soiled carpets and leaves carpets virtually residue free.

Recommended Applications

Olefin or Polyester - Residential
Heavy Soiling - Commercial
Commercial Restaurant and Food Service

Approved Applications

Heavy Soiling - Residential - Stain Resist
Normal Soiling - Commercial



General Usage

Truck Mount: 32 oz./5 Gallons
Portable: 2 oz./5 Gallons

pH

Concentrated 10.5 - 11.5
Ready To Use 10.0 - 11.0

Part Number

9091000 - Gallons 9094000 - 4 Gallon Cases
9095000 - 5 Gallons 9095500 - 55 Gallons



RINSE SURFACTANT 2000

A concentrated mild alkaline liquid emulsifying detergent rinse formulated to be safe for all synthetic carpets and most wool carpets. Specifically designed to be environmentally friendly and leave the least amount of soil and detergent residue.

Recommended Applications

Normal Soiling - Residential - Stain Resist
Wool Carpet
Normal Soiling - Commercial

Approved Applications

Heavy Soiling - Residential - Stain Resist
Olefin or Polyester - Residential
Heavy Soiling - Commercial
Commercial Restaurant and Food Service

General Usage

Truck Mount: 1:32 - 64
Portable: 1:32 - 64

pH

Concentrated 8.5 - 9.5
Ready To Use 8.0 - 9.0

Part Number

9041000 - Gallons 9044000 - 4 Gallon Cases
9045000 - 5 Gallons 9045500 - 55 Gallons



SPECTRUM CARPET EXTRACTION DETERGENT

Packaged cleaning power is yours. This mild alkaline solution uses an entirely new liquid cleaning chemistry that is safe for all synthetic carpeting. Using low foaming, anionic technology makes it ideal for type 6 nylon carpeting and its advanced formulation protects equipment. The ideal detergent rinse to simplify your life by its effectiveness on a broad range of carpets and soiling conditions.

Recommended Applications

Normal Soiling - Residential - Stain Resist
Normal Soiling - Commercial
Commercial Restaurant and Food Service
Commercial Wool Carpets

Approved Applications

Heavy Soiling - Residential - Stain Resist
Olefin or Polyester - Residential
Heavy Soiling - Commercial

General Usage

Truck Mount: 32 oz./5 Gallons
Portable: 2 oz./5 Gallons

pH

Concentrated 9.0 - 9.8
Ready To Use 8.5 - 9.5

Part Number

9211000 - Gallons 9214000 - 4 Gallon Cases
9215000 - 5 Gallons 9215500 - 55 Gallons



CLARIFY

Clarify™ is a specially formulated powder carpet extraction detergent that is ideally suited for completing the hot water extraction cleaning of synthetic carpets. Clarify™ is equally effective with portable, walk-behind, or truck mounted extraction cleaning equipment. Its highly concentrated formula is economical to use, saves you money on shipping charges, and is especially designed to be easier to mix with water. Its special adapt-to-fiber formula makes a simple, yet high powered choice for your company.

Recommended Applications

Heavy Soiling - Residential - Stain Resist
Olefin or Polyester - Residential
Normal Soiling - Commercial

Heavy Soiling - Commercial

Commercial Restaurant and Food Service

Approved Applications

Normal Soiling - Residential - Stain Resist

General Usage

Truck Mount: 1:32 - 64
Portable: 1:32 - 64

pH

Concentrated 11.0 - 12.0
Ready To Use 9.5 - 10.5

Part Number

8910006 - 6# Jar 8914006 - Cases of 4# Jars
8910450 - 40# Drum

Carpet Extraction Detergents, Acid Rinse Detergents



FORMULA "A"

A Steam Way® "hallmark" in the cleaning industry. This powder mild alkaline rinse detergent is safe for all synthetic carpets and super concentrated for economical use. Formulated to leave the carpet fresh and clean. It has remained an effective cleaning agent without change for over 30 years.

Recommended Applications

Normal Soiling - Residential - Stain Resist
Normal Soiling - Commercial

Approved Applications

Heavy Soiling - Residential - Stain Resist
Olefin or Polyester - Residential
Heavy Soiling - Commercial
Commercial Restaurant and Food Service

General Usage

Truck Mount: 3 - 6 oz./Gallon
Portable: 3/4 oz./Gallon

pH

Concentrated 8.5 - 9.5
Ready To Use 8.0 - 9.0

Part Number

9000008 - 8# Jars 9004008 - Cases of 4 8# Jars
9000450 - 45# Drum 9001111 - 100# Drum



FORMULA "A+"

This super concentrated high performance detergent rinse is our most aggressive powder to complete restorative extraction cleaning. It emulsifies, dissolves, and suspends all types of soiling for complete removal with the ultimate cleaning power.

Recommended Applications

Olefin or Polyester - Residential
Heavy Soiling - Commercial
Commercial Restaurant and Food Service

Approved Applications

Heavy Soiling - Residential - Stain Resist
Normal Soiling - Commercial

General Usage

Truck Mount: 3 - 6 oz./Gallon
Portable: 3/4 oz./Gallon

pH

Concentrated 10.5 - 11.5
Ready To Use 8.0 - 9.0

Part Number

9010006 - 6# Jars 9014006 - Cases of 4 6# Jars
9010450 - 40# Drum



FIBER REFRESH

ACID RINSE DETERGENT

Fiber Refresh™ is a special blend of acids, surfactants, corrosion inhibitors and stabilizers that is especially designed and formulated to be used as a fine fabric rinse and acid rinse detergent. It is used to complete the extraction cleaning job with a New Fresh-N-Clean Fragrance. Its pH neutralizes cleaning residues, stabilizes color, prevents browning and leaves a softer feel to the fabric.

Recommended Applications

Normal Soiling - Residential - Stain Resist
Heavy Soiling - Residential - Stain Resist
Wool Carpet

Approved Applications

Olefin or Polyester - Residential
Normal Soiling - Commercial
Heavy Soiling - Commercial
Commercial Restaurant and Food Service

General Usage

Truck Mount: 32 oz./5 Gallons
Portable: 2 oz./5 Gallons

pH

Concentrated 3.0 - 4.0
Ready To Use 4.0 - 5.0

Part Number

8921000 - Gallons 8924000 - 4 Gallon Cases
8925000 - 5 Gallons 8925500 - 55 Gallons



FORMULA "D"

FINE FABRIC ACID RINSE

A formulated acid rinse detergent for cleaners who prefer a pH balancing, low residue cleaning system. Its acid base makes it safe for all synthetic and wool carpeting, while it completes a balanced cleaning job. Its pH neutralizes cleaning residues, stabilizes color, leaves a softer feel to the carpet or fabric and prevents and corrects browning.

Recommended Applications

Wool Carpets
Normal Soiling - Residential - Stain Resist
Heavy Soiling - Commercial

Approved Applications

Heavy Soiling - Residential - Stain Resist
Olefin or Polyester - Residential
Normal Soiling - Commercial

Commercial Restaurant and Food Service

General Usage

Truck Mount: 32 oz./5 Gallons
Portable: 2 oz./5 Gallons

pH

Concentrated 2.0 - 4.0
Ready To Use 4.0 - 5.0

Part Number

9941000 - Gallons 9944000 - 4 Gallon Cases
9945000 - 5 Gallons 9945500 - 55 Gallons

Upholstery Cleaning Presprays, Shampoos, Detergent Rinses

UPHOLSTERY

CHEMICALS



UPHOLSTERY PRESPRAY

PRESPRAYS

This ammoniated self-neutralizing prespray is specifically formulated to dissolve and dislodge soil specific to upholstery. Its fast acting formula aggressively works to remove soiling from synthetic upholstery. It's ready to use formula helps eliminate mistakes.

Recommended Applications
Heavy Soiling - Synthetic Fibers

Approved Applications
Normal Soiling - Synthetic Fibers

General Usage

Truck Mount: Straight
Portable: Straight

pH

Concentrated 9.5
Ready To Use 9.5 (Self-Neutralizing)

Part Number

9131000 - Gallons 9134000 - 4 Gallon Cases
9135000 - 5 Gallons 9135500 - 55 Gallons



FORMULA "O" FABRIC PRECONDITIONER

PRESPRAYS

This powerful preconditioner for heavily soiled synthetic upholstery, that uses citrus solvents, effectively removes food, oils, grease, body oils, and other common type's of upholstery soiling. This product can be safely and effectively used on most synthetic and natural carpet and upholstery fabrics.

Recommended Applications
Normal Soiling - Synthetic Fibers
Heavy Soiling - Synthetic Fibers

Approved Applications
Cottons and Haitian Cottons
Natural Fabric Upholstery
Wool

General Usage

Truck Mount: 1:8 - 12
Portable: 1:8 - 12

pH

Concentrated 8.5 - 9.5
Ready To Use 8.0 - 9.0

Part Number

9161000 - Gallons 9164000 - 4 Gallon Cases
9165000 - 5 Gallons 9165500 - 55 Gallons



COTTON AND WOOL PRESPRAY

PRESPRAYS

Specifically formulated to safely and effectively clean cottons and Haitian cotton upholstery without the obnoxious odors associated with Haitian cotton shampoos. This prespray breaks down and suspends common soiling.

Recommended Applications
Cottons and Haitian Cottons
Rayons, Questionable Fabrics
Natural Fabrics

Approved Applications
Normal Soiling - Synthetic Fibers
Heavy Soiling - Synthetic Fibers

General Usage

Truck Mount: 1:8
Portable: 1:8

pH

Concentrated 6.5 - 7.5
Ready To Use 6.5 - 7.5

Part Number

9061000 - Gallons 9064000 - 4 Gallon Cases
9065500 - 55 Gallons



MIST AND BRUSH

LOW MOISTURE UPHOLSTERY CLEANING

Mist and Brush works effectively as a low moisture cleaning solution for delicate natural upholstery. Lightly mist onto fabric, agitate, allow to dry. Vacuum out. Its anti-resoiling and soil encapsulation technology make it ideal for low moisture upholstery cleaning.

Recommended Applications
Low Moisture Cleaning
Cottons, Jacquard Weaves
Natural Fabrics

Approved Applications
Wool, Rayon, Linen

General Usage

Truck Mount: 1:16
Portable: 1:16

pH

Concentrated 7.0 - 8.0
Ready To Use 7.0 - 8.0

Part Number

8751000 - Gallons 8754000 - 4 Gallon Cases
8755500 - 55 Gallons

Upholstery Cleaning Presprays, Shampoos, Detergent Rinses



FINE FABRIC DETERGENT

LOW MOISTURE/SHAMPOO CLEANING

This unique shampoo/solvent formula will effectively work to break down and remove soils that are specific to upholstery. Used as a shampoo or a rinse solution, it will safely and effectively clean most natural and synthetic fibers. Can be used in a low moisture cleaning application as a shampoo; as an effective wet shampoo cleaner, and as a detergent rinse.

Recommended Applications

Normal Soiling - Synthetic Fibers
Heavy Soiling - Synthetic Fibers
Low Moisture Cleaning

Approved Applications

Cottons and Haitian Cottons

General Usage

Truck Mount: 1:8 - 12
Portable: 1:8 - 12

pH

Concentrated 8.0 - 9.0
Ready To Use 8.0 - 8.5

Part Number

9151000 - Gallons 9154000 - 4 Gallon Cases
9155500 - 55 Gallons



CARPET & UPHOLSTERY SHAMPOO

LOW MOISTURE/SHAMPOO CLEANING

This traditional shampoo formulation can be applied directly to the fabric with a manual or mechanical shampoo brush for even distribution and safer cleaning because it reduces the use of water to clean the upholstery.

Recommended Applications

Normal Soiling - Synthetic Fibers
Heavy Soiling - Synthetic Fibers
Low Moisture Cleaning

Approved Applications

Cottons and Haitian Cottons
Rayons, Questionable Fabrics

General Usage

Truck Mount: 1:8 - 24
Portable: 1:8 - 24

pH

Concentrated 7.0 - 8.0
Ready To Use 7.0 - 8.0

Part Number

9081000 - Gallons 9084000 - 4 Gallon Cases
9085500 - 55 Gallons



FORMULA "D" FINE FABRIC RINSE

EXTRACTION/DETERGENT RINSES

This versatile solution can be used as an acid rinse or a topical anti-browning agent or "sour". This fine fabric rinse completes the cleaning job of delicate and natural upholstery fabrics safely and effectively. It stabilizes color pH neutralizes cleaning residues, and prevents browning. It is also effective at the correction of browning.

Recommended Applications

Cottons and Haitian Cottons
All Extraction Bases Upholstery Cleaning
Natural Fabrics

Approved Applications

Normal Soiling - Synthetic Fibers
Heavy Soiling - Synthetic Fibers
Rayons, Questionable Fabrics

General Usage

Truck Mount: 32 oz./5 Gallons
Portable: 2 oz./5 Gallons

pH

Concentrated 2.0 - 4.0
Ready To Use 4.0 - 5.0

Part Number

9941000 - Gallons 9944000 - 4 Gallon Cases
9945000 - 5 Gallons 9945500 - 55 Gallons



FIBER REFRESH - ACID RINSE DETERGENT

EXTRACTION/DETERGENT RINSES

Fiber Refresh™ is a special blend of acids, surfactants, corrosion inhibitors and stabilizers that is especially designed and formulated to be used as a fine fabric rinse and acid rinse detergent. It is used to complete the extraction cleaning job with a New Fresh-N-Clean Fragrance. Its pH neutralizes cleaning residues, stabilizes color and prevents browning.

Recommended Applications

Normal Soiling - Synthetic Fibers
Cottons and Haitian Cottons
Rayons, Questionable Fabrics

Approved Applications

Heavy Soiling - Synthetic Fibers

General Usage

Truck Mount: 32 oz./5 Gallons
Portable: 2 oz./5 Gallons

pH

Concentrated 3.0 - 4.5
Ready To Use 4.0 - 5.0

Part Number

8921000 - Gallons 8924000 - 4 Gallon Cases
8925000 - 5 Gallons 8925500 - 55 Gallons

Upholstery/Drapery Cleaning Presprays, Shampoos, Detergent Rinses



RINSE SURFACTANT 2000

EXTRACTION/DETERGENT RINSES

A concentrated mild alkaline liquid emulsifying detergent rinse formulated to be safe for all synthetic upholstery and most wool upholstery. Specifically designed to be environmentally friendly and leave the least amount of soil and detergent residue.

Recommended Applications

Normal Soiling - Synthetic Fibers
Heavy Soiling - Synthetic Fibers

Approved Applications

Durable Natural Fabrics

General Usage

Truck Mount: 32 oz./5 Gallons
Portable: 2 oz./5 Gallons

pH

Concentrated 8.5 - 9.5
Ready To Use 8.0 - 9.0

Part Number

9041000 - Gallons 9044000 - 4 Gallon Cases
9045000 - 5 Gallons 9045500 - 55 Gallons



UPHOLSTERY/DRAPERY DRY CLEANING SOLUTION

SPECIALTY

This ready-to-use dry cleaning formula is safe for most dry-clean-only upholstery and drapery fabrics. It is designed to effectively remove soils that are more common to upholstery and drapery fabrics such as airborne greases, smoke, body oils and more. It can be used safely with almost any dry cleaning capable machine.

Recommended Applications

Dry Cleaning Only Draperies
Non-Colorfast Upholstery - Dry Clean Only

Approved Applications

Dry-Wet-Dry Upholstery Cleaning
Moisture Barrier

General Usage

Truck Mount: Straight
Portable: Straight

pH

Concentrated N.A.
Ready To Use N.A.

Part Number

9101000 - Gallons 9104000 - 4 Gallon Cases
9105000 - 5 Gallons 9105500 - 55 Gallons



LEATHER CLEANER AND CONDITIONER

SPECIALTY

Most cleanable leather can be simply and safely cleaned and conditioned with this one professional formulation. You don't need an exhaustive kit of complicated colors and solutions! This special formula will remove stubborn soils while a conditioning additive penetrates the leather and allows it to last longer. Leather cleaner and conditioner should not be used on nubuck or suede leather.

Recommended Applications

Finished, Protected Leather

Approved Applications

Aniline Leather (will darken leather)

General Usage

Truck Mount: Straight
Portable: Straight

pH

Concentrated N.A.
Ready To Use N.A.

Part Number

9650100 - Quarts 9650120 - Cases of 12 Quarts

ORIENTAL/AREA RUG CLEANING SOLUTIONS



IN-PLANT RUG CLEANING DETERGENT

IN-PLANT

This ultra-concentrated liquid is used for cleaning of loose rugs with in-plant equipment. It can effectively be used with automatic metering equipment or with direct spray application. Its incredibly concentrated formula makes it effective for in-plant rug cleaning of most investment textile rugs.

Recommended Applications

In-Plant cleaning of area rugs, oriental rugs and other investment textiles

General Usage

Meter through rug washing machine according to manufacturer directions

pH

Concentrated 7.0 - 8.0
Ready To Use 7.0 - 8.0

Part Number

9195450 - 5 Gallons 9195500 - 55 Gallons

Oriental/Area Rug Cleaning Solutions



FORMULA "OBB"

FRINGE CLEANING

This oxidizing bleach can be used to clean and restore the white color of cotton fringes and other fibers used as fringe materials. Safer than Sodium Hypochlorite (Chlorine Bleach) and easier to use.

Recommended Applications

Fringe Cleaning of Oriental Rugs

Approved Applications

Cleaning Booster
Stain Removal Bleach

General Usage

1 oz./Gallon

pH

Concentrated N.A.
Ready To Use N.A.

Part Number

9300001 - 1.25# Jar 9300121 - 12/1.25# Jars



COTTON & WOOL PRESPRAY

PRESPRAY

Specifically formulated to safely and effectively clean natural fabrics in oriental and area rugs. This prespray breaks down and suspends common soils in area rugs for subsequent extraction/rinsing.

Recommended Applications

Oriental Rugs/Area Rugs with Natural Fibers

Approved Applications

Oriental Rugs/Area Rugs with Synthetic Fibers

General Usage

Truck Mount: 1:8 - 12
Portable: 1:8 - 12

pH

Concentrated 6.5 - 7.5
Ready To Use 6.5 - 7.5

Part Number

9061000 - Gallons 9064000 - 4 Gallon Cases
9065500 - 55 Gallons



FINE FABRIC DETERGENT

SHAMPOO

This unique shampoo/solvent formula will effectively work to break down and remove soils in oriental and area rugs. Used as a shampoo or a rinse solution, it will safely and effectively clean most natural and synthetic fibers. Fine Fabric Detergent's unique solvent shampoo formula makes it an effective soil remover whether used as a shampoo (4oz./gallon) or as a detergent rinse (8 oz./gallon).

Recommended Applications

Oriental/Area Rug In-Plant Cleaning or Shampooing
Natural and Synthetic Fibers

Approved Applications

Upholstery Cleaning Shampoo or Detergent Rinse

General Usage

Truck Mount: 64 oz./5 Gallons
Portable: 4 - 6 oz./5 Gallons

pH

Concentrated 8.0 - 9.0
Ready To Use 8.0 - 8.5

Part Number

9151000 - Gallons 9154000 - 4 Gallon Cases
9155500 - 55 Gallons



FORMULA "D"

FINE FABRIC RINSE

A formulated acid rinse detergent for cleaners who prefer a pH balancing, low residue cleaning system. Its acid base makes it safe for most synthetic and natural fiber rugs, while it completes a balanced cleaning job. It stabilizes color, prevents browning and leaves a soft feel to the fabric.

Recommended Applications

Oriental/Area Rug Cleaning
Natural and Synthetic Fiber

Approved Applications

Post Cleaning Acid Treatment

General Usage

Truck Mount: 32 oz./5 Gallons
Portable: 2 oz./5 Gallons

pH

Concentrated 4.0 - 5.0
Ready To Use 4.0 - 5.0

Part Number

9941000 - Gallons 9944000 - 4 Gallon Cases
9945000 - 5 Gallons 9945500 - 55 Gallons

Low Moisture Carpet Cleaning/Interim Appearance Retention

MIST AND BRUSH™ CARPET MAINTENANCE SYSTEM



Mist and Brush is the appearance retention interim carpet cleaning system that cleans with the speed and effectiveness of bonnet cleaning, but won't cause resoiling or leave abrasion marks left by aggressive rotary action. Mist and Brush is a low moisture appearance retention carpet cleaning system that uses encapsulation, soil resistant additions and a patented soil redeposit prevention additive.

Recommended Applications

Planned Commercial Carpet Maintenance
Commercial Carpets

Approved Applications

Residential Synthetic and Wool Carpets

General Usage

1:16

pH

Concentrated 7.0 - 8.0
Ready To Use 7.0 - 8.0

Part Number

8751000 - Gallons 8754000 - 4 Gallon Cases
8755500 - 55 Gallons



BONNET SCRUB

This solution dissolves and emulsifies soiling in carpet so it can be absorbed into the bonnet pad for subsequent removal. It is compatible with all types of bonnet systems, and is designed to leave the least amount of residue possible. Bonnet Scrub contains special cleaning additives to break down oil bases soiling.

Recommended Applications

Planned Commercial Carpet Maintenance
Commercial Carpets

Approved Applications

Residential Synthetic Carpets

General Usage

1:16

pH

Concentrated 10.0
Ready To Use 10.0

Part Number

9141000 - Gallons 9144000 - 4 Gallon Cases
9145500 - 55 Gallons



CARPET & UPHOLSTERY SHAMPOO

A super concentrated non-resoiling shampoo for use with rotary shampoo systems. It includes special lubricant additives to make shampooing easier and safer and soil resistant additives. It can be used with a conventional rotary shampoo machine or with a rotary shampoo extractor.

Recommended Applications

Planned Commercial Carpet Maintenance
Commercial Carpets

Approved Applications

Residential Synthetic and Wool Carpeting

General Usage

1:32 - 64

pH

Concentrated 7.0 - 8.0
Ready To Use 7.0 - 8.0

Part Number

9081000 - Gallons 9084000 - 4 Gallon Cases
9085500 - 55 Gallons

Specialty Carpet Treatments

FORMULA "OBB"

BOOSTER BLEACH ADDITIVE



This oxidizing bleach additive can be used to boost any preconditioner or rinse, when normal cleaning procedures are not restoring the appearance level of an extremely soiled synthetic carpeting to an acceptable level. This product can be used in conjunction with OLEFIN PLUS TLC to strip and remove the yellow oxidized soils that discolor light colored olefin and nylon carpets.

Recommended Applications

Olefin or polyester - Residential
Heavy Soiling - Commercial
Commercial Restaurant and Food Service

Approved Applications

Normal Soiling - Commercial
Asphalt Oil and Ice Melt Oil Removal
Oxidized Oils

General Usage

Truck Mount: 1 oz./Mixed Gal.
Portable: 1 oz./Mixed Gal.

pH

Concentrated 10.5 - 11.5
Ready To Use 10.0 - 10.5

Part Number

9300001 - 1.25# Jars 9300121 - Cases of 12/1.25# Jars

Specialty Carpet Treatments



YELLOW ELIMINATOR

YELLOWING CORRECTION

Although there are many contributing factors to the appearance of yellowing in carpeting, this solution provides technology that will effectively eliminate it in most occurrences. It is more effective and leaves less damaging residue than conventional citric acid treatments. It is specifically designed to eliminate yellowing caused by chemical off gassing from cushion or other products.

Recommended Applications

Normal Soiling - Residential - Stain Resist
Heavy Soiling - Residential - Stain Resist
Olefin or Polyester - Residential
Wool Carpets

Normal Soiling - Commercial
Heavy Soiling - Commercial
Commercial Restaurant and Food Service

General Usage

1:1 - 10

pH

Concentrated 1.5 - 2.0
Ready To Use 1.5 - 3.0

Part Number

9931000 - Gallons 9934000 - 4 Gallon Cases



FORMULA "D" FINE FABRIC RINSE

BROWNING PREVENTION/CORRECTION DYE STABILIZER

This versatile brown-out prevention and correction solution can be used as an acid rinse or a topical "sour". Cellulosic browning can be corrected most of the time with this solution. Formula "D" works effectively to prevent and correct cellulosic browning and browning created by other chemical imbalances.

Recommended Applications

Wool Carpets
Normal Soiling - Residential - Stain Resist
Heavy Soiling - Residential - Stain Resist
Olefin or Polyester - Residential

Normal Soiling - Commercial
Heavy Soiling - Commercial
Commercial Restaurant and Food Service

General Usage

1 - 3 oz./Gallon

pH

Concentrated 1.5 - 3.0
Ready To Use 2.0 - 4.5

Part Number

9941000 - Gallons 9944000 - 4 Gallon Cases
9945000 - 5 Gallons 9945500 - 55 Gallons



SUPER 60 DEFOAMER

FOAM CONTROL

This corrective agent prevents the build-up of foam in waste tanks and hoses during the extraction cleaning process. Foam can cause over-wetting and slow the cleaning process down. This product should be used in conjunction with the cleaning of carpeting that has had past repeated cleanings with a shampoo or bonnet system and there is a lot of residue in the carpet. It should only be applied to the carpeting directly in very extreme circumstances.

Recommended Applications

Heavy Soiling - Residential - Stain Resist
Olefin or Polyester - Residential
Normal Soiling - Commercial
Heavy Soiling - Commercial

Commercial Restaurant and Food Service

General Usage

1 oz./Gallon

pH

Concentrated N.A.
Ready To Use N.A.

Part Number

9901000 - Gallons 9904000 - 4 Gallon Cases



STATICOVER - AS II

ANTI-STATIC TREATMENT

A highly effective topical treatment for the effective neutralization of static electricity in carpeting. Application of this product to the carpeting will protect computers and other sensitive electronic equipment. This solution should not be used on stain resist carpeting unless directed by the warranty holder. This product has been demonstrated to effectively reduce static build-up in carpeting.

Recommended Applications

Olefin or Polyester - Residential
Normal Soiling - Commercial
Heavy Soiling - Commercial
Commercial Restaurant and Food Service

General Usage

1:1

pH

Concentrated N.A.
Ready To Use N.A.

Part Number

9851000 - Gallons 9854000 - 4 Gallon Cases

Spotting Chemicals

SPOTTING

CHEMICALS



SPOTTER 301

VOLATILE SOLVENT SPOTTER

This volatile solvent spotting solution achieves removal of most common oil and grease based spills without the need for chlorinated solvents. This product evaporates completely following use. It is the key spotter to remove most fresh oil and grease based spills.

Recommended Applications

Oil	Tar	Carbon
Grease	Glue	Dyes
Paint	Varnish	Lipstick
Lacquer	Asphalt	Some Cosmetics

Precautions

Avoid overuse on rubber backed carpets, latex, adhesives and high density foam

General Usage

Straight - Ready To Use

pH

Concentrated	N.A.
Ready To Use	N.A.

Part Number

9220010 - Pints	9222410 - Cases of 24/pints
9221000 - Gallons	9224000 - 4 Gallon Cases



NEW!

SPOTTER CGS

CITRUS GEL SPOTTER

New improved formula for Steam Way's Citrus Gel Spotter. Special solvent additives have made the citrus gel even more effective at removing chewing gum and made it even easier to rinse from the carpet. This citrus gel spotter does not penetrate to the backing of the carpet and is ideal for gum and other solvent soluble spots that need time to dissolve.

Recommended Applications

Gum
Wax
Tar
Come Paints

Precautions

Some latex and adhesives

General Usage

Straight - Ready To Use

pH

Concentrated	N.A.
Ready To Use	N.A.

Part Number

9290010 - Pints	9292410 - Cases of 24/pints
-----------------	-----------------------------



SPOTTER 701

NONVOLATILE SOLVENT SPOTTER

This non-volatile solvent spotter is designed to remove old paint, oxidized oils, and grease along with many other hardened solvent soluble spots. It works effectively on many inks, dyes and pigments as well as lacquer, varnish and nail polish. Spotter 701 is non-evaporative, so it works on older, dried spots but should be rinsed with Spotter 301.

Recommended Applications

Paint	Nail Polish
Lacquer	Lipstick
Varnish	Oxidized Oils
Glue	Some Cosmetics

Precautions

Will resoil if not rinsed with Spotter 301
Avoid overuse on rubber backed carpets, glue down carpets, latex, adhesives and high density foam

General Usage

Straight - Ready To Use

pH

Concentrated	N.A.
Ready To Use	N.A.

Part Number

9260010 - Pints	9262410 - Cases of 24/pints
9261000 - Gallons	9264000 - 4 Gallons Cases



NEW!

INK REMOVER

SOLVENT SOLUBLE INK REMOVER

This new solvent spotting formula is specifically designed to effectively treat and remove a many types of inks - ballpoint, magic marker, stamp pad and printing ink. It special blend of organic solvents allows it to treat and remove many different types of commonly spilled inks.

Recommended Applications

All types of ink on natural and synthetic carpet

Precautions

Do not overapply to carpet. Do not directly apply to upholstery

General Usage

Straight - Ready To Use

pH

Concentrated	N.A.
Ready To Use	N.A.

Part Number

9270010 - Pints	9272410 - Cases of 24/pints
9271000 - Gallons	9274000 - 4 Gallons Cases

Spotting Chemicals



SPOTTER 501

ALKALINE DETERGENT SPOTTER

This alkaline detergent spotting solution is for blood, food and other protein spots that did not come out with regular cleaning. Most protein bases spots and spills especially blood, should be treated and removed with Spotter 501 prior to cleaning! If the spot is a common household food or beverage derived from an animal source, this is the spotter to use.

Recommended Applications

Blood Albumin
Protein Spots
Food
Fatty Acids

Precautions

Dye bleeding
Browning on cellulosic fibers
Don not use with chlorine bleach

General Usage

Straight - Ready To Use

pH

Concentrated 10.0
Ready To Use 10.0

Part Number

9240010 - Pints 9242410 - Cases of 24/pints
9241000 - Gallons 9244000 - 4 Gallons Cases



SPOTTER 601

ACID DETERGENT SPOTTER

This acid detergent spotting solution is for tannin spills, coffee, tea, beverages, and is an ideal urine pretreatment. It is effective as an acid spotter as well as a urine pretreatment. If the spot is a common household food or beverage from a plant source, this is the spotter to use.

Recommended Applications

Coffee Feces
Tea Soft Drinks
Tannin Spots Beverages
Urine Wine

Precautions

Odor associated with use of acid spotters

General Usage

Straight - Ready To Use

pH

Concentrated 3.5 - 4.5
Ready To Use 3.5 - 4.5

Part Number

9250010 - Pints 9252410 - Cases of 24/pints
9251000 - Gallons 9254000 - 4 Gallons Cases



RUST REMOVER

HYDROFLUORIC ACID (2%) SPOTTER

This hydrofluoric acid (2%) based spotting solution will make the rust color disappear rapidly when applied to rust stains. Must be used with severe caution. It will work immediately at making even the toughest rust spots disappear. Always wear protective goggles and gloves when using this product. Always rinse area with water thoroughly after use.

Recommended Applications

Rust
Iron

Precautions

Always wear protective gloves and goggles
Will burn skin, etch glass, corrode metal

General Usage

Straight - Ready To Use

pH

Concentrated 1.5
Ready To Use 1.5

Part Number

9320010 - Pints 9321210 - Cases of 12/pints



RUST SUBTRACTOR

NON-HYDROFLUORIC ACID RUST REMOVER

Rust Subtractor is a state-of-the-art formulation designed to effectively remove or eliminate spots and stains caused by rust without the use of Hydrofluoric Acid. Its remarkable formulation works quickly with just a gentle bit of agitation.

Recommended Applications

Rust
Iron

Precautions

Requires more agitation than Rust Remover

General Usage

Straight - Ready To Use

pH

Concentrated 3.0
Ready To Use 3.0

Part Number

9390010 - Pints 9392410 - Cases of 24/pints

Spotting Chemicals



FIRST ACTION

CARPET & UPHOLSTERY SPOTTING SOLUTION

Your first response to virtually every spill, spot or stain on virtually every carpet. It is ideal for spotting and removing spills caused by common household food and beverages. It is also effective on iodine spills. First Action contains a special additive which allows it to make many color stains virtually disappear without any further action necessary.

Recommended Applications

First response spotter for all spills except gum, rust, grease or oil

Precautions

Not highly effective on some older stains and any oil and grease based spill

General Usage

Straight - Ready To Use

pH

Concentrated 9.0
Ready To Use 9.0

Part Number

9330010 - Pints 9332410 - Cases of 24/pints
9331000 - Gallons 9334000 - 4 Gallon Cases



SPOTTER RB

COFFEE/STAIN REMOVER

This mild reducing bleach will remove coffee and tea stains from almost every carpet. This product must be mixed with water at the job site. This product works effectively on almost any stain caused by a beverage spill derived from a plant source. Effectiveness can be enhanced with the use of steam.

Recommended Applications

Coffee
Tea
Beverage stains that are plant derived

Precautions

Should be carefully pretested on wool
Powder is respiratory irritant
Can remove color from carpet

General Usage

1 oz./32 oz. Hot Water

pH

Concentrated N.A.
Ready To Use N.A.

Part Number

9270003 - 2.5# Jar 9270123 - 12/2.5# Jars



FORMULA OBB

OXIDIZING BLEACH/BOOSTER

This oxidizing bleach can be used to remove the last traces of dye and discoloration stains caused by a wide variety of materials. It is especially effective on stains that are caused by a source that is not from a food or beverage. Can be effective at removing the last traces of yellowing or browning.

Recommended Applications

Last traces of stain or discoloration caused by sources other than food or beverages

Precautions

Skin irritant
Can remove color from carpet

General Usage

1 oz./32 oz. Hot Water

pH

Concentrated N.A.
Ready To Use N.A.

Part Number

9300001 - 1.5# Jar 9300121 - 12/1.5# Jars

EQUIPMENT MAINTENANCE SOLUTIONS



DESCALER

This specially formulated solution will safely and effectively remove scale build-up from your heating system coil to allow it to work more efficiently. It contains special corrosion inhibitors which will prolong the life of your cleaning equipment. Descaler is an equipment maintenance solution only and should be used with extreme caution as it contains harsh descaling acids. Never allow it to contact your skin, carpets, or fabrics.

Recommended Applications

Descaling of heater coils on truck mounted equipment

General Usage

Consult your equipment owners manual for proper instructions.

pH

Concentrated 1.0
Ready To Use 1.0-2.0

Part Number

9950100 - One Quart Bottle

Spotting Chemicals / Spot and Stain Removal Kits



PROFESSIONAL DELUXE SPOTTING KIT

The New Deluxe Professional Spotting Kit from Steam Way® gives your company just what it needs - a complete, exhaustive line of spot removal and stain treatment solutions in a simple-to-use format and procedural guideline. It doesn't make your technicians into "mad" chemists, yet it also recognizes that just one or two "miracle cure" spotters won't deliver all the miracles your customers need. When you provide your company with the New Steam Way® Deluxe Professional Spotting Kit, you give them the power to succeed and the procedures to let them know how to do it safely.

Spotting Kit Contents:

1 Each	Deluxe Spotting Close Lid Box	1 Pint	Spotter "701" - Non-Volatile Dry Solvent
1 Roll	pH Paper	1 Pint	Rust Remover
1 Each	Bone Spatula	1 Pint	Spotter "CGS" - Citrus Gel Spotter
1 Each	Large Tamping Brush	1 2.5# Jar	Spotter "RB" - Coffee/Stain Remover
1 Pint	Spotter "301" - Volatile Dry Solvent	1 Each	Empty Pint Bottle
1 Pint	First Action - First Response Spotter	1 Each	16 oz. Trigger Sprayer
1 Pint	Spotter "501" - Alkaline Spotting Solution	1 Each	Laminated Insert Sheet
1 Pint	Spotter "601" - Acid Spotting Solution		Part #9979999

STAIN SUBTRACTOR STAIN TREATMENT KIT

NEW!



The Stain Subtractor Kit is designed to effectively make many stains caused by sources other than a food or beverage disappear. This two part stain treatment solution is mixed according to directions right before stain treatment begins. It works most effectively when used in combination with a low pressure, high volume steam application system such as a Wagner® Power Steamer Wallpaper Remover. This mixture when used in conjunction with extended exposure to an ultraviolet (black) light, can often make mustard or herbal tea stains lighten significantly. Try the Stain Subtractor Kit on furniture stains, plant food stains, color additives and more. Very often, it will make problem stains magically disappear.

Spotting Kit Contents:

1 Pint	Solution A - Liquid Stain Treatment Oxidizer	
1 Pint	Solution B - Spotter "501" Alkaline Spotter	part #9970810
1 8 oz.	Bottle C - Mixing Bottle With Fingertip Trigger Sprayer	

RED SUBTRACTOR STAIN TREATMENT KIT

NEW!



Tested superior to every leading red stain and fruit drink stain removal solution in the industry. By using a unique combination of Steam Way® solutions, in conjunction with low pressure steam application from a Wagner® Power Steamer, you can safely and effectively remove most stains from synthetic carpeting. No iron is required which makes the use of this kit less labor intensive, less towel wasting, less time consuming, and less likely to cause carpet color removal than old-fashioned stain treatment solutions. Simply mix the two solutions together as called for on the label; heavily mist the mixed solution onto the stained area; place the steam applicator hood over the stain; and the stain will disappear within minutes. The kit contains two solutions, a mixing bottle, and simple to understand, detailed instructions.

Spotting Kit Contents:

1 Pint	Solution A - Powder Stain Treatment	1 3 oz.	Measuring Scoop
1 Pint	Solution B - Spotter "501" Alkaline Spotter		part #9970510
1 8 oz.	Bottle C - Mixing Bottle With Fingertip Trigger Sprayer		

Consumer/Client Resale Products

FIRST ACTION SPOTTER & ONSLAUGHT PLUS DEODORIZER



First Action Spotter

NEW!



Onslaught Plus

NEW!

Shouldn't You Get In On Some of the Profits?

Last year, a few consumer chemical manufacturers sold millions upon millions of dollars of carpet spotters and deodorizers to carpet consumers. All you have to do is watch the infomercials on late night television to know consumers are clamoring for spotters and deodorizers that do a better job. Trouble is, the companies that make those solutions don't know carpet like Steam Way does. They don't understand what can happen when a consumer over uses or misuses these types of solutions on a carpet. You have to live with those nightmares every day in your cleaning business.

So what is the solution? Why not get in on some of those profits and help your customers and potential customers develop beneficial routine maintenance habits by selling them products that work better? Sell them the new Steam Way Consumer Carpet Spotter - FIRST ACTION SPOTTER, and the new consumer version of Steam Way's best selling carpet deodorizer - ONSLAUGHT PLUS. Packaged just like those grocery store chemicals, but with the cleaning and deodorizing performance you expect from Steam Way. Buy these products from your local Steam Way Distributor and then resell them to customers and potential customers. You can solve a problem for your customer, and put more money in your pocket. FIRST ACTION is the first response to almost any common spill, and will effectively treat everything from a cola spill to a iodine stain. ONSLAUGHT PLUS recognizes that as long as the dog or cat is coming back, so will the pet "accidents." It's designed to be used continuously and repeatedly to control odors without causing harm to the carpet or the pet and not to cause rapid resoiling. Order one or two to try, or one or two cases to sell. Because it is time you got in on some of those profits!

First Action Spotter

9330022 22 oz. Consumer Bottle
9331222 Case 12/1-22 oz. bottles

Onslaught Plus

9520022 22 oz. Consumer Bottle
9521222 Case 12/1-22 oz. bottles

SPOTTER "201" PRIVATE LABEL CONSUMER SPOTTER WITH YOUR COMPANY NAME



You can have your company name and logo on this incredible consumer spotting solution!

Now with orders as small as 220 - 8 oz. or 16 oz. bottles, you can have your company name and logo screen printed, to have your own consumer spotting solution for resale or giveaway. Professional cleaners and restorers, carpet retailers, installers, carpet mills, and fiber producers have all had their name, logo, and phone number printed on this solution. Spotter "201" will effectively remove common household food and beverage spills and many other spills when they are fresh. It will leave virtually no residue and will not cause resoiling. There is a nominal one-time screen preparation fee, then you can reorder in

minimum quantities as often as you would like. Don't miss out on this exciting marketing opportunity. After all, would you rather know what spotters your customer is using, or let them continue to use whatever is under the kitchen sink?

Part #'s: 8 oz. flip top bottle - 9280041

16 oz. flip top spotting bottle - 9280042

CARPET FORCE SPOTTING KIT



A Consumer Or Maintenance Personnel Spotting Kit For Comprehensive On-Location Spot Treatment. The ideal size kit with the most important essential spotting solutions. This kit contains all basic spotting solutions for a commercial or residential setting. Directions are included on the box.

Spotting Kit Contents

1 Pint	Spotter "301" - Volatile Solvent Spotter	1 Pint	Spotter "601" - Acid Detergent Spotter
1 Pint	First Action Spotter	1 Each	Spotting Spatula
1 Pint	Spotter "501" - Alkaline Detergent Spotter	Part #9970000	

Fabric Protection



FABRICOVER® PLUS

A water-carried fluorochemical for water and oil based soil resistancy and water and oil-based spill repellency. The standard for carpet protection. This product has been laboratory tested and demonstrated to provide superior soil and stain resistance on both water and oil based spills than the leading brand.

Recommended Applications:

Residential Carpet

Nylon, Olefin, Polyester
Stain Resist Carpet
All traffic loads and soiling conditions

Commercial Carpet

Restaurant & Food Service Office - Regular Traffic
Retail - Regular Traffic Office - High Traffic
Retail - High Traffic Nylon, Olefin, Polyester

Approved Applications

Commercial Carpet

Wool Carpets
Residential Carpet
Light Color - Regular and High Traffic

General Usage

1:4 - 8
200 - 400 sq. ft. per mixed gallon

pH

Concentrated 1.5 - 2.0
Ready To Use 1.5 - 3.0

Part Number

9861000 - Gallons 9864000 - 4 Gallon Cases



ALL FABRIC FABRICOVER II®

A solvent-carried fluorochemical for soil resistancy and water and oil-based spill repellency on natural fabrics, upholstery, oriental and area rugs, and wool fabrics. This product is used on any natural fabric where drying time is important. It should only be applied when adequate ventilation for an extended time can be provided.

Recommended Applications

Upholstery

Natural Fabrics, and
Delicate Weaves

Commercial Carpet

Wool Carpet

Residential Carpet

Wool Carpet

Approved Applications

Upholstery

Synthetic - Regular Soil
Synthetic - High Soil

General Usage

Straight
1000 sq. ft. per gallon

pH

Concentrated N.A.
Ready To Use N.A.

Part Number

9841000 - Gallons 9844000 - 4 Gallon Cases



FABRICOVER GOLD®

The highest level of stain protection available. A soil resistant, oil and water-based stain resisting agent with dye blocking technology for nylon carpeting. Contains water-carried fluorochemicals and acid dye-resisting dye blockers. This is the only fabric protector on the market that contains a high enough level of dyeblockers to completely restore a water damaged nylon carpet. Can be safely used on both stain resistant and non-stain resistant nylon carpeting so that you need only one overspray. The only protector on the market that can fully restore or implement the total stain resistance of a carpet to include total dye-blocking protection.

Recommended Applications

Residential Carpet

Dark Color - High Traffic
Stain Resistant Carpet
Dark Color - Regular Traffic
Light Color - Regular Traffic

Dark Color - High Traffic
Light Color - High Traffic
Water damaged nylon carpets
Carpets whose stain resistancy needs to be restored

Approved Applications

Commercial Carpet

Wool Carpet
Residential Carpet
Wool Carpet

General Usage

1:1
200 - 400 sq. ft. per mixed gallon

pH

Concentrated N.A.
Ready To Use N.A.

Part Number

9911000 - Gallons 9914000 - 4 Gallon Cases



TEFLON ADVANCED®

The concentrated water-carried fluorochemical from Du Pont will resist soiling and impart stain repellency to carpeting. New, innovative fluorochemical technology provides even better spill repellency. Teflon Advanced® is available to sell with a warranty protection program backed by Du Pont and is supported by unique selling brochures, arm patches, and supporting decals. Teflon Advanced® is packaged ready to apply through your in-line pressure sprayer.

Recommended Applications

Upholstery

Synthetic - Regular soil
Synthetic - High Soil

Residential Carpet

Light Color - Regular Traffic
Light Color - High Traffic

Teflon Advanced Promotional Materials

Sales Brochures (100 pack) - 7121075, Decals - 7420205,
Arm Patches - 7509000, Demo Blotters (100 pack) - 7420206

General Usage

1:4
200 - 400 sq. ft. per mixed gallon

pH

Concentrated N.A.
Ready To Use N.A.

Part Number

9821100 - Gallons 9824100 - 4 Gallon Cases

Deodorization and Restoration



ODOR ELIMINATOR - LEMON

A general purpose water soluble deodorizer that can be direct-sprayed, added to cleaning solutions, or wet-fogged. It doesn't just mask the odor, but contains an active odor counteracting agent. A great product for almost any application.

Recommended Applications

Cigarette and Tobacco Odors
Skunk Odors
Cooking Odors

Approved Applications

Urine Contamination - Deodorize Tear Gas Odors
Mold and Mildew Odors
Decomposing Protein Odors
Fuel Oil Spill Odors

General Usage

1:2 - 64

pH

Concentrated N.A.
Ready To Use N.A.

Part Number

9431000 - Gallons 9434000 - 4 Gallon Cases
9435500 - 55 Gallons



ODOR ELIMINATOR - CHERRY

A general purpose water soluble deodorizer that can be direct-sprayed, added to cleaning solutions, or wet-fogged. It doesn't just mask the odor, but contains an active odor counteracting agent. Cherry fragrance is a favorite of many.

Recommended Applications

Skunk Odors
Cooking Odors
Fuel Oil Spill Odors

Approved Applications

Urine Contamination - Deodorize
Mold and Mildew Odors
Cigarette and Tobacco Odors
Decomposing Protein Odors

General Usage

1:2 - 64

pH

Concentrated N.A.
Ready To Use N.A.

Part Number

9431001 - Gallons 9434001 - 4 Gallon Cases
9435501 - 55 Gallons



ODOR ELIMINATOR - MINT

A general purpose water soluble deodorizer that can be direct-sprayed, added to cleaning solutions, or wet-fogged. It doesn't just mask the odor, but contains an active odor counteracting agent. This product can be used when leaving a "lighter" deodorizing fragrance is required.

Recommended Applications

Skunk Odors
Cooking Odors

Approved Applications

Urine Contamination - Deodorize Fuel Oil Spill Odors
Mold and Mildew Odors Tear Gas Odors
Cigarette and Tobacco Odors
Decomposing Protein Odors

General Usage

1:2 - 64

pH

Concentrated N.A.
Ready To Use N.A.

Part Number

9431002 - Gallons 9434002 - 4 Gallon Cases
9435502 - 55 Gallons



ODOR ELIMINATOR - CINNAMON

A general purpose water soluble deodorizer that can be direct-sprayed, added to cleaning solutions, or wet-fogged. It doesn't just mask the odor, but contains an active odor counteracting agent. This product is especially effective on severe smoke odors after a smoke or fire damage.

Recommended Applications

Cigarette and Tobacco Odors
Skunk Odors
Cooking Odors
Smoke Odor Counteractant

Approved Applications

Urine Contamination - Deodorize Fuel Oil Spill Odors
Mold and Mildew Odors Tear Gas Odors
Decomposing Protein Odors

General Usage

1:2 - 64

pH

Concentrated N.A.
Ready To Use N.A.

Part Number

9441000 - Gallons 9444000 - 4 Gallon Cases
9445500 - 55 Gallons

Deodorization and Restoration



FIRST RESPONSE

DECONTAMINATION DEODORIZER

This specially formulated decontamination deodorizer is safe to apply to counteract odors from urine, mildew and many other common malodors. It work exceptionally well as a prespray deodorizer. It is compatible with residential stain resistant carpet. It works effectively to eliminate odors caused by water intrusion.

Recommended Applications

Urine Contamination - Deodorize
Urine Contamination - Decontaminate
Urine Contamination - Neutralize
Mold and Mildew Odors

Decomposing Protein Odors
Area Decontamination

General Usage

1:1 - 8

pH

Concentrated 4.0 - 5.0
Ready To Use 4.5 - 6.0

Part Number

9501000 - Gallons 9504000 - 4 Gallon Cases
9505500 - 55 Gallons



ENZ-ODOR III

ENZYME DEODORANT

This third generation enzyme producing deodorizer contains a synergistic combination of several enzymes to digest the source of protein odors such as urine, feces, milk, blood, and more. The most effective pet urine odor counteractant. It is designed to be faster and more durable compared to conventional enzyme deodorants.

Recommended Applications

Urine Contamination - Deodorize
Urine Contamination - Decontaminate
Urine Contamination - Neutralize Salts
Decomposing Protein Odors

General Usage

1:2

pH

Concentrated N.A.
Ready To Use N.A.

Part Number

9541000 - Gallons 9544000 - 4 Gallon Cases
9545500 - 55 Gallons



ONSLAUGHT PET ODOR DEODORIZER

A new, simpler problem solving technology breakthrough that encapsulates the pet urine odor at its molecular source for permanent odor control. It doesn't need strong fragrances and masks which can adversely effect chemically sensitive people. The method of application is key as the solution must be sprayed on heavily and come into contact with all of the odor molecules.

Recommended Applications

Urine Contamination - Deodorize
Protein Odors
Decaying Protein Odors

General Usage

1:4 - 8

pH

Concentrated N.A.
Ready To Use N.A.

Part Number

9521000 - Gallons 9524000 - 4 Gallon Cases
9525500 - 55 Gallons



SPOTTER "601" URINE PRETREATMENT

A urine designed to be sprayed onto urine contamination to breakup and neutralize large amounts of contamination and alkaline salt deposits. Often times, it will stop or reverse the yellow discoloration caused by urine contamination. Using a urine pretreatment first will help whatever solution with which you choose to deodorize work more effectively.

Recommended Applications

Urine Contamination - Decontamination
Urine Contamination - Neutralize Salts

General Usage

1:1 - 4

pH

Concentrated 3.0 - 4.5
Ready To Use 4.0 - 5.0

Part Number

9250010 - Pints 9251000 - Gallons
9254000 - 4 Gallon Cases 9255500 - 55 Gallons

Deodorization and Restoration

NEW!



MSD EXTRA

E.P.A. REGISTERED DISINFECTANT/SANITIZER

That extra punch you need for effective sanitizing, cleaning and deodorizing. Finally you have an EPA registered product for the problems/challenges you face in your cleaning and restoration business. MSD Extra is an EPA registered product for water damage restoration, cleaning carpet against odor causing bacteria; a carpet sanitizer against odor causing bacteria; mold and mildew control; and sewer back-up and river flooding. It is effective against over 60 harmful microorganisms.

Recommended Applications

Water Damage Restoration Area Decontamination
 Carpet Sanitizing Urine Contamination - Decontamination
 Mold and Mildew Control
 Sewer Back-Up and River Flooding

General Usage

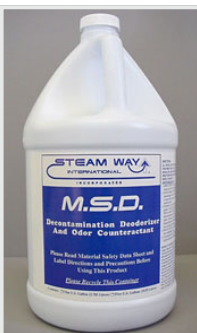
1:32 - 64

pH

Concentrated N.A.
 Ready To Use N.A.

Part Number

9471000 - Gallons 9474000 - 4 Gallon Cases
 9475500 - 55 Gallons



MSD

DECONTAMINATION DEODORIZER

This effective decontamination deodorizer and odor counteractant can be used to counteract odors at their contamination source. It is effective for area decontamination, water damage restoration, and on pet urine contamination. It can be used on hard surfaces as well as most carpet and upholstery fabrics safely and effectively.

Recommended Applications

Urine Contamination - Decontaminate
 Water Damage - Clear Water and Grey Water
 Mold and Mildew Odors
 Area Decontamination

General Usage

1:16 - 64

pH

Concentrated N.A.
 Ready To Use N.A.

Part Number

9461000 - Gallons 9464000 - 4 Gallon Cases
 9465500 - 55 Gallons

DRY CLEANING SPONGES



Chemically treated sponges designed to remove soot and smoke dry from hard and soft surfaces during restoration. The special absorbency works to effectively remove soot from surfaces dry.

Recommended Applications

Dry Wiping For Soot Removal From Hard Surfaces

General Usage

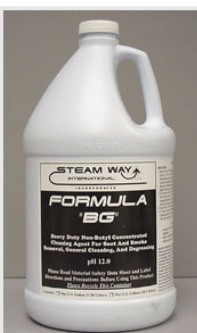
6 - 12 for and average house

pH

Concentrated N.A.
 Ready To Use N.A.

Part Number

4803601 - Single 4803601-36 - Case/36 Sponges



FORMULA "BG"

GENERAL SOOT, GREASE CLEAN-UP

A high-powered soot and smoke cleaning agent and degreaser for many hard surfaces. It is ideal for clean-up after a fire or smoke damage of durable hard surfaces and works effectively in combination with pressure washing to remove oil, grease, and soot from many surfaces.

Recommended Applications

Concrete
 Stone, Masonry
 Appliances, Sinks, Hard Surfaces

Approved Applications

Walls
 Wallpapered Walls with Water-Safe Glue

General Usage

Truck Mount: 1:32 - 64
 Portable: 1:32 - 64

pH

Concentrated 10.6
 Ready To Use 10.6

Part Number

9601000 - Gallons 9604000 - 4 Gallon Cases
 9605500 - 55 Gallons

Unsmoke / Steam Way Solutions



UNFLAME

FABRIC FLAME RETARDANT

A flame retardant that is sprayed on mattresses, draperies, pillows, carpets, upholstery, clothing and other fabric. Unflame reduces oxidation, stops flame spread and further combustion and extinguishes the fire. It will not affect the appearance, feel, or dyes on fabrics not normally harmed by water. Covers approximately 500 sq. ft per gallon. It must be reapplied after wet cleaning. Applied by direct spray or immersion

Recommended Applications
Fabric Flame Retardant

General Usage
Straight

Part Number
SW342501000 - Gallons
SW342502000 - 4 Gallon Cases



LAST RESORT

WATER/SOLVENT SOLUBLE HEAVY DUTY ODOR COUNTERACTANT

A water soluble and solvent emulsifiable ultra-heavy duty odor counteractant. Last Resort is the product to use when all other chemicals or systems fail. Used for chemical containment on heavy smoke odors and as an odor decontaminant for decaying protein odors. Last Resort is generally mixed with other products for odor neutralization, chemical containment, and presealing. Not for fogging. Treatment area must be vacated of people and pets. Applicator must wear respiratory protection.

Recommended Applications
Skunk Odors
Surface Deodorization
Smoke Odor Deodorization

Approved Applications
Pet Odor Deodorization
Mold and Mildew Odors
Water Damage Odors
Scaling Inaccessible Areas

General Usage
1:32 - 64

Part Number
SW432256000 - Quarts



MICROBAN X-580

INSTITUTIONAL SPRAY PLUS

Three way protection against germs, insects, and odors on carpets and virtually any surface. Antimicrobial action kills allergy and disease causing germs, bacteria, fungi, and mold and mildew. US EPA registered for deodorization of carpet and other fabrics, its quaternary and phenolic disinfectants make it the best product for water damage and sewage backup jobs. Controls dust mites, lice, and fleas with its insecticide ingredients.

Recommended Applications
Pet Odor Deodorization
Mold and Mildew Odors
Water Damage - Grey, Clear, and Black Water
Controls Dust Mites, Fleas and Lice

General Usage
Straight

Part Number
SW221501000 - Gallons
SW221502000 - 4 Gallon Cases
SW221504000 - 55 Gallons



MICROBAN

DISINFECTANT SPRAY

This US EPA registered mildeicide, bactericide, and fungicide is an effective disinfectant, sanitizer, and deodorant. The industry standard for odors related to water damage, as well as treatment of sewage backup. It has a broad spectrum of treatment and rapid antimicrobial action. Used straight, one gallon treats 800-1200 sq. ft. of carpet.

Recommended Applications
Pet Odor Deodorization
Mold and Mildew Odors
Water Damage - Grey, Clear and Black Water

General Usage
Straight

Part Number
SW221241000 - Gallons
SW221242000 - 4 Gallon Cases
SW221244000 - 55 Gallons



Unsmoke / Steam Way Solutions



BAD ODOR BLOCKS

TIME RELEASE DEODORANTS

A natural wicking deodorant block. When the package is opened the deodorant is carried by air currents throughout a malodorous area providing instant odor modification. Place in furnace plenum, underneath seat of car, duct system register, or intake of carpet dryer, etc. A special absorbent material is impregnated with fragrances for prolonged generation of deodorant vapors into atmosphere. Available in the following fragrances: Lemon Lime, Leather, Cinnamon Spice, Rose, Apple, Potpourri, Lilac, Almond, Cedar, Jasmine, Xmas Pine, Rainforest, Mint, vanilla, Kentucky Bluegrass, and Cherry.

Recommended Applications

Wood Surface Cleaning & Deodorizing
Time Release Deodorants

Approved Applications

Pet Odor Deodorization Smoke Odor Deodorization
Cigarette and Tobacco Smoke
Wet Fogging
Surface Deodorization

General Usage

Each

Part Number

SW532000000 - Single Block Specify Fragrance
SW532000025 - Case-25 Blocks



9-D-9

SMOKE ODOR COUNTERACTANT

Used on smoked damaged surfaces to prevent odors from evaporating into the atmosphere. Can also be used as an additive to water based cleaning solutions for deodorization. Not for fogging. This general purpose highly concentrated odor counteractant is specifically formulated for fire and smoke related odors. Can be applied directly to charred wood for deodorization.

Recommended Applications

Skunk Odors Smoke Odor Deodorization
Cigarette and Tobacco Odors
Burnt Alcohol Odors
Surface Deodorization

Approved Applications

Protein Odor Deodorization

General Usage

1:20 - 45

Part Number

SW1001000 - Gallons
SW1002000 - 4 Gallon Cases



SMOKE WASH

LAUNDRY/FABRIC CLEANING BOOSTER AND DEODORANT

This laundry cleaning booster and deodorant is a water-based, lightly fragranced product intended as a deodorant and cleaning additive for smoke damaged clothes and fabrics.

Recommended Applications

Laundry/Fabric Deodorizing
Cigarette and Tobacco Odors
Smoke Odor Deodorization

General Usage

1:32 - 64

pH

Concentrated 7.0 - 8.0
Ready To Use 7.0 - 8.0

Part Number

SW2251000 - Gallons
SW2252000 - 4 Gallon Cases



THERMO 55

THERMAL FOG 5000 SOLVENT BASED DEODORIZER

The essential chemical for the final phase of smoke and fire odor neutralization. A special solvent based formula recreates the path followed by smoke, neutralizing its effect by deodorizing. One ounce of solution treats 500-1000 cubic feet of air space. Special precautions need to be followed by the applicator and the treatment area must be vacated of pets and people. Available in Cherry, Citrus, and Kentucky Bluegrass fragrance.

Recommended Applications

Pet Odor Deodorization
Thermal Fogging
Smoke Odor Deodorization

Approved Applications

Wood Surface Cleaning & Deodorizing
Cigarette and Tobacco Smoke

General Usage

Straight

Part Number - Cherry

SW3001901 - Gallons
SW3002901 - 4 Gallon Cases

Part Number - Citrus

SW3001909 - Gallons
SW3002909 - 4 Gallon Cases

Part Number - Kentucky Bluegrass

SW3001906 - Gallons
SW3002906 - 4 Gallon Cases

Unsmoke / Steam Way Solutions



WOODCRAFT

SMOKE DAMAGED WOOD RESTORATION GEL

This specially formulated gel cleans and deodorizes smoke damaged wooden surfaces while simultaneously replacing the essential moisture and oils removed by heat and smoke. This gentle and effective cleaner is applied to finished wood with fine (0000) steel wool pads in the direction of the wood grain. This versatile cleaner is also effective on many appliance finishes, and other surfaces.

Recommended Applications

- Wood Surface Cleaning & Deodorizing
- Surface Deodorization
- Smoke Odor Deodorization

General Usage
Straight

Part Number

- SW3007000 - Gallons
- SW3002000 - 4 Gallon Cases



DOUBLE "O"

PROTEIN ODOR COUNTERACTANT

A heavy duty concentrate formulated to eliminate odors from synthetic and plastic fires, burnt meat and poultry, spoiled food, and other protein odors. Primarily used in kitchen fires and for spoiled food in refrigerators or freezers, Double "O" should be applied directly to the source of the odors. Specially formulated to eliminate stubborn protein odors other deodorizers can't.

Recommended Applications

- Burnt Alcohol Odors
- Protein Odor Deodorization
- Surface Deodorization
- Smoke Odor Deodorization

General Usage
1:64 - 128

Part Number

- SW1751000 - Gallons
- SW1752000 - 4 Gallon Cases



SPACE SPRAY

CUREODOR SOLVENT DEODORIZER

A heavy duty industrial strength solvent based odor counteractant for long lasting odor control. Excellent for water damage related odors, pet urine contamination odors, and smoke odors. Areas to be treated must be vacated of people and pets. Applicators must wear proper respiratory equipment. Available in Cherry, Mint and Citrus fragrances.

Recommended Applications

- Pet Odor Deodorization
- Mold and Mildew Odors
- Water Damage Odors
- Cigarette and Tobacco Odors
- Surface Deodorization
- Smoke Odor Deodorization

Approved Applications

- Burnt Alcohol Odors
- Protein Odor Deodorization

General Usage
Straight

Part Number - Citrus

- SW2751909 - Gallons
- SW2752909 - 4 Gallon Cases

Part Number - Mint

- SW2751908 - Gallons
- SW2752908 - 4 Gallon Cases

Part Number - Cherry

- SW2751901 - Gallons
- SW2752901 - 4 Gallon Cases



THERMO 2000

ODOR PENETRATOR LOW TOXICITY/LOW VOC THERMAL FOGGING AGENT

This specially formulated food and cosmetic grade ingredient thermal fogging solution does not contribute to VOC's. Designed to counteract offensive odors related to smoke and fire damage, tobacco smoke and oil burner puffbacks. It suppresses malodors. Available in Cherry, Citrus, and Kentucky Bluegrass fragrance.

Recommended Applications

- Thermal Fogging
- Smoke Odor Deodorization

Approved Applications

- Wood Surface Cleaning & Deodorizing
- Cigarette and Tobacco Smoke

General Usage
Straight

Part Number - Cherry

- SW3101901 - Gallons
- SW3102901 - 4 Gallon Cases

Part Number - Citrus

- SW3101909 - Gallons
- SW3102909 - 4 Gallon Cases

Part Number - Kentucky Bluegrass

- SW3101906 - Gallons
- SW3102906 - 4 Gallon Cases



Unsmoke / Steam Way Solutions



UNSOOT #1

DUCT SEALER/ENCAPSULANT

Duct sealant and encapsulant for use after fires, smoke damage, oil furnace puffbacks, etc... used to seal contaminants in inaccessible areas. Applied through U.L.V. Fogger suppresses malodors and prevents evaporation of odors into atmosphere. Covers approximately 500 sq. ft. per mixed gallon.

Recommended Applications

Sealing Inaccessible Areas
Smoke Odor Deodorization

General Usage

1:2 - 4

Part Number

SW3501000 - Gallons
SW3502000 - 4 Gallon Cases



C.O.C.

CRYSTAL ODOR COUNTERACTANT/ODOR ABSORBING PELLETS

C.O.C. is a granular product impregnated with deodorizing vapors that quickly evaporates for airborne odor treatment and deodorization. Ideal for use for smoke odor control to use in furnace plenums, attics, voids, and in inconspicuous areas. This industrial, commercial grade odor counteractant can also be used to be sprinkled under carpet and pad for pet odors.

Recommended Applications

Pet Odor Deodorization
Cigarette and Tobacco Smoke
Surface Deodorization
Smoke Odor Deodorization

General Usage

2 - 4 oz./100 sq. ft. of floor

Part Number

SW1501000 - Gallons
SW1502000 - 4 Gallon Cases

Ceiling and Wall Cleaning



WALL CLEANING LIQUID

WALL WASHING AND CLEANING SOLUTION

This productivity based wall cleaning solution will effectively clean many hard and non-porous surfaces. It is designed to ideally clean walls and ceilings of grease, soil, smoke, root, fingerprints and more. Its special blend of surfactants, solvents, and alkaline builders break down, dissolve, and emulsify heavy soiling from many hard surfaces. It can be easily rinsed from the surface.

Recommended Applications

Walls
Concrete
Appliances, Sinks, Hard Surfaces

Approved Applications

Wallpapered Walls with Water-Safe Glue

General Usage

Truck Mount: 1:32 - 64
Portable: 1:32 - 64

pH

Concentrated 7.0 - 8.0
Ready To Use 7.0 - 8.0

Part Number

9701000 - Gallons 9704000 - 4 Gallon Cases
9705500 - 55 Gallons



MAGNA-BRIGHT CEILING CLEANING

ACOUSTICAL CEILING CLEANING SOLUTION

This two-part mix will safely and effectively clean all types of porous surfaces, and is especially designed for surfaces that cannot or should not be wiped - such as acoustical ceiling tiles, blown-in "popcorn" ceilings, unfinished wood, and stone and mortar. It emulsifies and oxidizes soil so that dirt, nicotine, smoke, soot, oils, and greases are broken down into tiny particles where they fall harmlessly to the ground below. For surfaces that can be wiped or sponged, it works like magic in quick and effective cleaning of non-porous surfaces. In order to maintain acoustical ceilings, it is imperative to get them on a scheduled maintenance program as soon as possible. Some acoustical and blown-in ceilings that are heavily soiled and have not been cleaned over an extended period, will not be restored with this or any ceiling cleaning solution. Every job should be preinspected and demonstrated to determine effectiveness. The main cleaning solution is activated to increase chemical activity and oxidize soils by an activator solution.

Recommended Applications

Acoustical Ceilings Stone, Masonry
Blown-In "Popcorn" Ceilings
Wallpapered Walls with Water-Safe Glue

Approved Applications

Walls
Concrete

General Usage

Truck Mount: 1:32 - 64
Portable: 1:32 - 64

pH

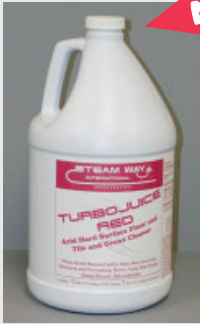
Concentrated 10.5 - 11.5
Ready To Use 10.0 - 10.5

Part Number

9731000 - Gallons 9734000 - 4 Gallon Cases

Tile and Grout Cleaning

NEW!



TURBOJUICE™ RED

ACID CLEANER

For acid-side cleaning of man-made ceramic, porcelain, bathroom fixtures and quarry tile. This all purpose cleaning and neutralizing agent will simplify your choice of cleaners. It's versatile and economical formula is nonabrasive and eliminates soap scum, mineral scale-up and imbedded stains.

Recommended Applications

General Floor Cleaning
General Purpose Cleaning
Man-Made Ceramic
Porcelain

Bathroom Fixtures
Quarry Tile

General Usage

1:32 - 256

Part Number

9751000 - Gallons
9754000 - 4 Gallon Cases

NEW!



TURBOJUICE™ WHITE

NEUTRAL CLEANER

Used to neutralize and rinse floors after cleaning with TurboJuice Red or TurboJuice Blue. Safe on almost all surfaces. It can be used as a stand alone maintenance cleaner for manual or automatic scrubbing on resilient floors, linoleum, vinyl tile, marble, concrete, terrazzo and rubber. It dissolves and emulsifies soil, dirt and grease. Keeps your floors shiny clean.

Recommended Applications

Resilient Floors
Terrazzo
Marble, Granite, Stone, Slate
General Floor Cleaning

General Cleaning
Floor Surface Neutralizing

General Usage

1:64 - 128

Part Number

9761000 - Gallons
9764000 - 4 Gallon Cases

NEW!



TURBOJUICE™ BLUE

ALKALINE CLEANER

A high powered cleaning agent to strip away oil, grease and soil build-up on floors without the use of harsh solvents. It can be used on concrete, masonry, ceramic tile, porcelain and quarry tile for heavy duty cleaning. It also works excellent for general heavy duty cleaning and maintenance cleaning.

Recommended Applications

Concrete
Masonry
Ceramic Tile
Porcelain

Quarry Tile

General Usage

1:1 - 100

Part Number

9771000 - Gallons
9774000 - 4 Gallon Cases

TILE AND GROUT CLEANING, HARD SURFACE FLOOR CLEANING PROCEDURES

1. Prespray

Apply TURBOJUICE RED (mixed 1:32 - 256) or TURBOJUICE BLUE (mixed 1:1 - 100) to floor surface being cleaned. Apply with Magna-Bright In-Line Sprayer for increased efficiency.

2. Pressure Clean and Rinse

Pressure clean and rinse with turbojuice white (mixed 1:64 - 128) to neutralize floor surface. Use Hard Surface Wand or other rotary hard surface floor cleaning tool. Use special application tools for cleaning edges and under counters.

General Procedures

1. These procedures are designed for man-made tile that is nonporous, acid resistant, and scratch resistant.
2. Always test all cleaning agents in an inconspicuous area for color fastness and surface compatibility prior to use.
3. Use of truck mount or high performance portable with special pressure cleaning tools allows for complete recovery of waste water.
4. Special seals and finishes may be required to protect grout from staining and soil based yellowing.

Hard Surface Floor Maintenance



SHEDD NO RINSE STRIPPER

STRIPPERS

This fast, effective no rinse floor stripper provides no need for extra rinse steps. It removes most types of seals, finishes, and waxes to leave the floor stripped clean in less time with less effort. There is no need for extra rinse steps. This non-ammoniated mop on formula penetrates deep, softens, and lifts a wide variety of floor coatings so they can be easily be picked up with a clean mop or wet vac.

Recommended Applications

Resilient Floors
Terrazzo
Concrete, Bricks
Quarry Tile

Approved Applications

Acrylic seals, finishes, urethane, blends, burnished floors, waxes
Deep, thorough stripping action

General Usage

1: 2 - 12

pH

Concentrated 13.5
Ready To Use 12.0 - 13.0

Part Number

8601000 - Gallons 8604000 - 4 Gallon Cases
9605000 - 5 Gallons



WAXERASE

STRIPPERS

The ultimately powerful finish stripper. Waxerase™ provides deep complete stripping that is fast, effective, and thorough. It reduces labor cost by leaving the floor stripped clean in less time with less efforts. This remarkable non-ammoniated emulsifier removes even heavy wax and finish build-ups with a mop and bucket only. The concentrated formula penetrates and lifts old finish instantly.

Recommended Applications

Resilient Floors Brick, concrete surfaces
Terrazzo
Concrete, Bricks
Quarry Tile

Approved Applications

Strips with less time and less efforts
Acrylic finishes, waxes, urethane blends, sealers, undercoaters
Fast, effective, thorough
Super concentrated formula

General Usage

1: 4 - 5

pH

Concentrated 13.5
Ready To Use 13.0 - 13.5

Part Number

8611000 - Gallons 8614000 - 4 Gallon Cases
8615000 - 5 Gallons



FLOORICOVER STAIN RESISTANT SEALER

SEALERS

This specially formulated highly stain resistant sealer meets or exceeds CSMA and UI (ASTMD - 2047- 69) slip resistant standards. It provides a semipermanent, high gloss seal that protects against antioxidants from walk off mats and protects even the most delicate floors. Conventional Strippers will not remove this special sealer. FLOORICOVER is a semi-permanent seal that literally closes entry of spilled materials to the floor.

Recommended Applications

Resilient Floors
Terrazzo
Linoleum
Concrete, Bricks

Approved Applications

Apply only to thoroughly stripped, well rinsed floors
Compatible with most finishes
Fills pores and levels surfaces
Meets slip resistant standards

General Usage

Straight, 16% solids
2000 sq. ft. per gallon

pH

Concentrated 7.0 - 8.0
Ready To Use 7.0 - 8.0

Part Number

8621000 - Gallons 8624000 - 4 Gallon Cases
8625000 - 5 Gallons



RENOSHINE MOP-ON FINISH RESTORER

RENOVATORS

This thermoplastic emulsion heals scratches and repairs traffic lanes to revive the overall appearance of floors without build-up. Renoshine™ will not breakdown or powder during high speed buffing for hard, ultra-brilliant surfaces. This special polymer system will not build-up, yellow, or discolor even the lightest floors. A thermoplastic polymer to clean and restore to "like new" appearance of floors.

Recommended Applications

Resilient Floors Quarry Tile
Terrazzo Marble, Granite, Slate
Linoleum
Concrete, Bricks

Approved Applications

Apply as mop on or with automatic scrubber
Unique, heat activated formula for use with high speed and ultra high speed machines
Enhance the original shine

General Usage

1:4

pH

Concentrated 8.0 - 8.5
Ready To Use 8.0 - 8.5

Part Number

8631000 - Gallons 8634000 - 4 Gallon Cases
8635000 - 5 Gallons

Hard Surface Floor Maintenance



GLISTEN SEAL & FINISH

FLOOR FINISH

This labor-saving, high solids formula provides a durable mark resistant coating through high performance polymer technology. It meets or exceeds UL and CSMA requirements for slip resistance (ASTMD 2047-69). It will provide crystal clarity, is versatile to use, and easy to apply. High performance polymer technology that is durable and mark resistant. Use with any maintenance program.

Recommended Applications

Resilient Floors
Terrazzo
Regular or high speed buffing

Approved Applications

Crystal clarity in a finish
Versatile to use
All types of traffic and all methods of application
Use with any maintenance program

General Usage

Straight
20% solids (ASTM D 2834)

pH

Concentrated 8.0 - 9.0
Ready To Use 8.0 - 9.0

Part Number

8641000 - Gallons 8644000 - 4 Gallon Cases
8645000 - 5 Gallons



BRAVADO SEAL & FINISH

FLOOR FINISH

The ultimate adapt-to-floor finish for virtually every type of hard surface flooring. It will minimize training time and inventory and is flexible to your equipment. It meets or exceeds UL and CSMA requirements for slip resistance (ASTMD 2047-69). You can level the "working" field with BRAVADO, the adaptable one product floor seal and finish. Suited to all types of flooring. High performance, next generation acrylic technology.

Recommended Applications

Resilient Floors
Terrazzo
Linoleum
Concrete, Bricks
Quarry Tile
Marble, Granite, Slate

Approved Applications

Suited to many types of flooring
Minimize training and inventory with one product
Get the job done right on time, the first time
Adapt-to-floor formula

General Usage

Straight
22% Solids - (ASTM D)

pH

Concentrated 8.0 - 9.0
Ready To Use 8.0 - 9.0

Part Number

8651000 - Gallons 8654000 - 4 Gallon Cases
8655000 - 5 Gallons



ARRAY NEUTRAL CLEANER

NEUTRAL CLEANER

Safe on almost all surfaces. Array can be used for most floors - linoleum, asphalt and vinyl tile, marble concrete, terrazzo, and rubber. It can be used for manual and automatic scrubbing. It is also effective on hard surfaces - painted walls, venetian blinds, woodwork, plastic, porcelain, and glass. This fast economical cleaner is non-abrasive.

Recommended Applications

Resilient Floors
Terrazzo
Marble, Granite, Slate
General Floor Cleaning
General Purpose
Cleaning

Approved Applications

Floor Surface Neutralizing
Glass and Window
Bathroom Fixture Cleaning

General Usage:

1:32 - 64

pH

Concentrated 8.0
Ready To Use 7.5 - 8.0

Part Number

8661000 - Gallons 8664000 - 4 Gallon Cases
8665000 - 5 Gallons



KLENSURFACE ACID CLEANER

ACID CLEANER

For neutralizing, damp mopping, and bathroom fixture cleaning. Kleensurface™ is an all-purpose cleaning and neutralizing agent that will simplify your choice of cleaners. This versatile, economical cleaner in non-abrasive

Recommended Applications

Floor Surface Neutralizing
General Floor Cleaning
General Purpose Cleaning
Bathroom Fixture Cleaning

Approved Applications

Versatile
Safe - noncorrosive, no strong acids or alkalis
Non-abrasive
Simplifies choice of cleaners

General Usage

1:16 - 64

pH

Concentrated 2.0
Ready To Use 2.0-3.0

Part Number

8671000 - Gallons 8674000 - 4 Gallon Cases
8675000 - 5 Gallons

Residential Wood Floor Care

PROCEDURES

WOOD FLOOR FINISH RESTORATION



For Cleaning and Floor Preparation -

Mix 12 ounces **WOOD FLOOR PREP CLEANER** with 1 gallon of water (for heavy soiling use 16 ounces of cleaner). Apply mixed solution to the floor. Agitate with a (175 - 300 rpm) low speed rotary floor machine using a maroon pad or equivalent. For best results, place a white buffing pad between the maroon pad and the floor machine driver block. Mop the floor with a tac rag, cotton towel, or absorbent bonnet pad. Repeat procedures if necessary. Pay particular attention to edges of room, where some cleaning and wiping by hand may be necessary.



For Finish Restoration

Use **AQUACOAT RESIDENTIAL MATTE FINISH RESTORER** straight. Pour out in straight line. Normal coverage is 800 - 1000 square feet per gallon. Spread the finish out evenly with finish applicator or lambs wool applicator. Continue to pour and spread the product until an even coating has been applied over the area. Allow at least 30 minutes drying time, then apply a second coat of finish.

WOOD FLOOR FINISH RENOVATION



For Cleaning and Floor Preparation

Mix 16 ounces **WOOD FLOOR PREP CLEANER** with 1 gallon of water. Agitate with a (175 - 300 rpm) low speed rotary floor machine using a maroon pad or equivalent. For best results, place a white buffing pad between the maroon pad and the floor machine driver block. Mop the floor with a tac rag, cotton towel, or absorbent bonnet pad. Apply 120 grit screen to driver block of floor machine. Thoroughly agitate floor with grit screen. Pick up dust and debris with wet/dry shop vacuum. Mop the floor with cleaner and tac rag, cotton towel, or bonnet pad. Repeat dust removal procedures if necessary.



For Finish Renovation

Use **AQUACOAT PLUS FLOOR FINISH** straight. Pour out in straight line. Normal coverage is 1000 - 1500 square feet per gallon. Spread the finish out evenly with finish applicator or lambs wool applicator. Continue to pour and spread the product until an even coating has been applied over the area. Allow at least 30 minutes drying time, then apply a second coat or finish.

WOOD FLOOR MAINTENANCE CLEANING



Mix 2 ounces **WOOD FLOOR PREP CLEANER** with 1 gallon of water. Mop with tac rag or absorbent cotton towels. You may also use a low speed rotary floor machine with an absorbent bonnet pad for agitation, cleaning and buffing.

ACCESSORIES

MAROON SCRUBBING PAD



For floor cleaning and creating abrasion on surface for finish adherence. part number R9706-1 single

R9706 case of 10

GRIT SCREEN



For minor sanding, paint removal and removal of previous finish. (120 grit screen)

part number R9710-1 single

R9710 case of 10

BONNET PAD



For cleaning, drying and buffing. part number 4840021 21" Bonnet Pad

LIGHTWEIGHT APPLICATOR BAR



For finish application. Uses 18" applicator bar pad with woven pad. part number R9703 Applicator Bar R9705 18" Woven Applicator Bar Pad 4807100-2 Wood Extension Pole

Residential Wood Floor Care

WOOD FLOOR PREP CLEANER



This multipurpose cleaning agent can be used for regular cleaning and maintenance of all sealed and finished wood floors. It will remove soil build-up without leaving a film typical of other cleaners. This cleaning product is essential for use before refinishing with AquaCoat residential Wood Floor Matte Finish restorer or AquaCoat Plus Emulsion Glossy Finish for fine wood floors.

Recommended Applications

General maintenance cleaning
Floor prep cleaning and abrasion for finish application

Approved Applications

For wood floors with water based seals and finishes
For wood floors with solvent based seals and finishes
For wood floors with oil modified based seals and finishes

General Usage:

1:2 - 16

pH

Concentrated 7.5 - 8.0
Ready To Use 7.5 - 8.0

Part Number

9661000 - Gallons
9664000 - 4 Gallon Cases



AQUACOAT RESIDENTIAL WOOD FLOOR MATTE FINISH RESTORER

This product will provide a beautiful refinish to your customers fine wood floors. It contains 40% more active ingredients than the competitions matte finish for a stronger, more durable protection. This product also works great for restring the finish to water and smoke damaged wood furniture. The 1-2 punch of Wood Floor Prep Cleaner and AquaCoat Matte Finish Restorer will successfully complete and refinish 90% of the residential wood floors you encounter.

Recommended Applications

Cleaning and finish restoration

Approved Applications

For wood floors with water based seals and finishes
For wood floors with solvent based seals and finishes
For wood floors with oil modified based seals and finishes

General Usage

Straight, 800-1000 sq. ft. per gallon

pH

Concentrated 8.5 - 9.0
Ready To Use 8.5 - 9.0

Part Number

9671000 - Gallons
9674000 - 4 Gallon Cases



AQUACOAT PLUS GLOSSY EMULSION GLOSSY FINISH FOR FINE WOOD FLOORS

AquaCoat Plus is designed to renovate severely soiled floors that need a complete reglossed finish due to damage from pain, wear, and other spilled materials. It can completely finish a bare residential wood floor. When used in conjunction with the available catalyst, it can finish or refinish commercial gym floors without the use of solvents. AquaCoat Plus can be applied as a first finish to new or newly sanded floors and can be applied over properly prepared solvent coatings.

Recommended Applications

Cleaning, grit screen sanding, and finish renovation
Finishing bare wood floors
Renovating finish of wood floors damaged by paint and other spilled materials

Approved Applications

For wood floors with water based seals and finishes
For wood floors with solvent based seals and finishes
For wood floors with oil modified based seals and finishes

General Usage

Straight, 1000-1500 sq. ft. per gallon

pH

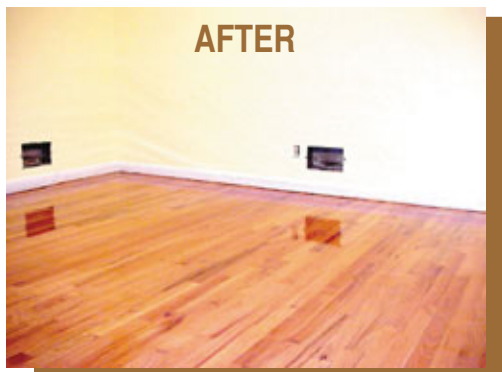
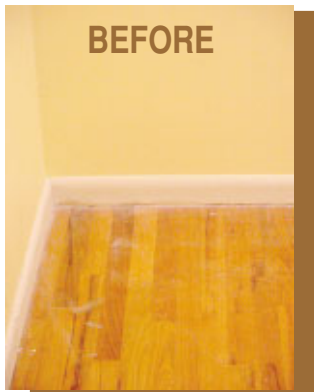
Concentrated 8.5 - 9.0
Ready To Use 8.5 - 9.0

Part Number

9681000 - Gallons
9684000 - 4 Gallon Cases

Your Customers Are Asking For Someone To Maintain Their Wood Floor Investment. Shouldn't It Be You? Steam Way's Residential Hard Wood Floor Care Program is the industry's most comprehensive, yet simple to apply program.

Clean. Refinish. Renovate Finish. The Choice Belongs To You and Your Customer



"Thank you for the great service you've given us over the years. Steam Way's commitment to quality service and products goes way beyond our expectations. I wanted to let you know that we appreciate Steam Way and all of the opportunities you have provided for us by manufacturing superb equipment and solutions, as well as assisting us along the way.

We are extremely thankful for Steam Way which has given us terrific service ever since we entered this great industry in 1983. To us, it is extremely important to have a supplier who is there for us, the business owner, and Steam Way shines through over and over again."

Scott Rendall
Rendall's Sci-Clean
Brighton, Michigan

Your Steam Way® CLEANING TECH CATALOG

Includes:

- **Carpet Cleaning**
 - **Upholstery and Fabric Cleaning**
 - **Drapery Cleaning**
 - **Ceiling Cleaning**
 - **Wall Cleaning**
 - **Tile and Grout Cleaning**
 - **Hard Surface Floor Care**
 - **Residential Wood Floor Care**
 - **Water Damage Restoration**
 - **Fire and Smoke Damage Restoration**
 - **Deodorization and Decontamination**
- Equipment, Chemicals, Cleaning Tools, &
Training & Educational Materials**

"Steam Way International exemplifies what I teach in my sustainable business course at the University of North Carolina as a quality based business. The type we look to when we want to bring about positive changes in the environment in which we live. In my nearly 20 year relationship with Steam Way, I have observed a constancy of purpose to continuously improve the products it manufactures and sells; and to gather the facts and promote the science of cleaning. Where high performance extraction equipment is key to demonstrating the relation of cleaning to improved indoor air quality, Steam Way has the experience and the right equipment. Like other quality companies in the cleaning and carpet industries, Steam Way takes a win-win view of things. What is good for the industry in terms of basic cleaning science and education, is good for business."

Dr. Michael Berry
University of North Carolina
Chapel Hill, North Carolina

***For The Name of Your
Nearest Steam Way®
Distributor, Call
1-800-447-8326
or contact us by email at
<steamway@steamway.com>***

**For the latest information and
product updates, log onto
www.steamway.com**



• 4550 Jackson Street • Denver, CO USA 80216 •
• (800) 447-8326 • (303) 355-3566 • FAX (303) 355-3516 •

Catalog Reorder Part # 7205555
Code: 030401