



OWNER'S MANUAL **VAC-IT PANELS**



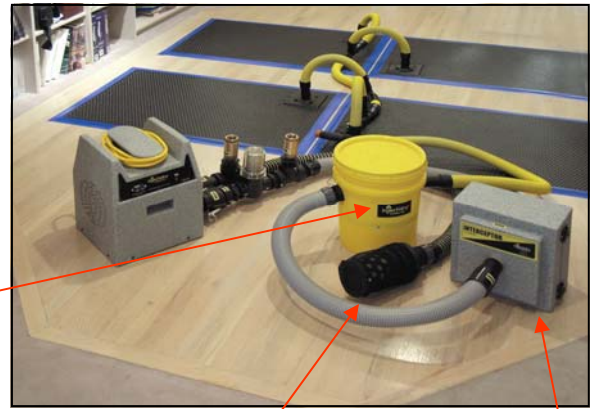
U.S. Patent 6,886,271 and patent pending

Injectidry Systems, Inc.
Phone: 425-822-3851 Fax: 425-745-8480 Toll Free: 800-257-0797
www.injectidry.com

WARNING ABOUT BULK WATER

Whenever you are going to dry floors or walls with an HP system we strongly recommend that you attempt to remove hidden (or obvious) standing water. This can be accomplished by one or two ways. First - wipe up, wet vacuum any obvious standing water.

Before you attach the HP system to your lines, connect the hoses up to a portable or truckmount vacuum line and apply suction (15-20 mins) to the surface to be dried. Or use our **NEW WATER SEPARATOR**.



WATER SEPARATOR, SILENCER, INTERCEPTOR
Sold separately

Silencer

Interceptor

WARNING: MOLD

Mold is in every environment, but only needs a few simple things to grow and multiply:

- Moisture
- Nutrients
- Favorable temperatures

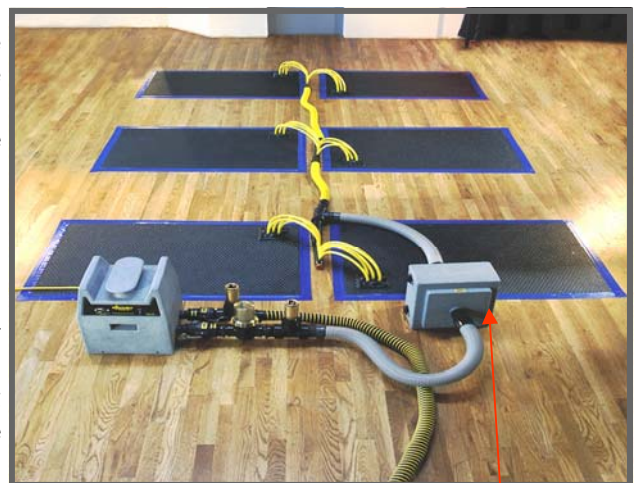
Tiny particles of mold are present in indoor and outdoor air. In nature, molds help break down dead materials and can be found growing on soil, foods, plant matter, and other items. Molds produce microscopic cells called "spores" which are very tiny and spread easily through the air. The spores act like seeds, forming new mold growths (colonies) when they find the right conditions. Be careful and use good judgment when drying, the use of our INTERCEPTOR HEPA Filter will help reduce the possibility of causing additional damages. Remember, every action has a reaction.

NEGATIVE DRYING

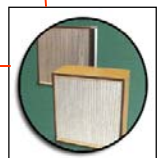
The goal is to remove moisture from the area of entrapment. Negative pressure (suction) drying can accomplish the air exchanges necessary to dry hardwood. Air movement caused by negative pressure, supplies a vehicle for moisture to leave. Absent an airflow through the trapped area, the ambient humidity within the space will rise to saturation. With suction applied to the airspace, the wet air will be drawn out of the flooring system. The result will be the introduction of lower humidity air which will act as an absorbent sponge to which the moisture can move from the surface.

The effort should be to move the moisture and contamination to a known location where no damage can happen. This can be accomplished by negatively pressurizing the cavity (interstitial space) by removing air from the area. The air can then be processed through a HEPA filter system, or moved to the exterior of the built environment. Unless an inline HEPA filter is used before the blower, the main unit can become contaminated. This approach is preferred by most Industrial Hygienists.

The goals of structural drying should include containing contamination without making the damage worse. The situation that exists when we arrive at the job should not be degraded as a result of our actions or inactivity.



Rated 99.97% Efficient



It's important to ask yourself questions when approaching a water damage situation.

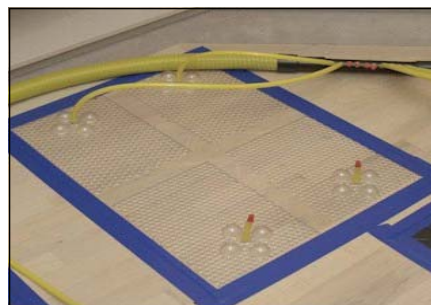
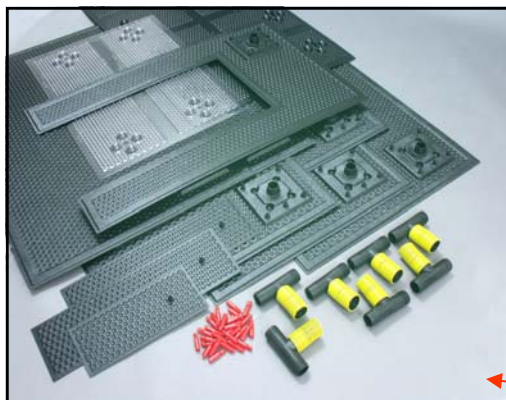
Think "TAME" for the principals of a successful dryout:

- **Time:** How much time did the water stay in direct contact with the surface?
How long has it been wet?
- **Atmosphere:** Control the atmosphere in the crawlspace or basement—they will end up in the house. Similarly control the relative humidity of the room with wet flooring
- **Materials:** What are all the layers of materials?
- **Equipment:** What equipment and course of action are needed to dry the structure back to pre-loss condition?

TYPES OF VAC-IT PANELS

There are two types of Vac-It Panels. One type has 3/8" tubing connections and the other has 1 1/2" hose cuff connections. See chart below to see the differences with the panels. Some panel types have a gasket to make a better seal. We recommend taping ALL panels to reduce the trip hazard, and ensure a good seal. You will have approximately 10% more pressure if panels are sealed.

NAME	SIZE	MADE OF	PORT SIZE	GASKET	DESCRIPTIVE
8 Point	46"x30"	ABS	3/8" Tubing	NA	General purpose panel, can be cut down to make specialty size panels
U Panel Kit	(1) U, (2) 6.75"x22.75", (1) 6"x14"	ABS	3/8" Tubing	YES	Fits toilets, doorways, small areas. Extraction points are located to one side of the panel, minimizing trip hazards. Gasket allows for tighter seal.
Clear	23"x30"	Poly Carb.	3/8" Tubing	NA	Allows view of moisture coming out of material being dried, great as a demonstration tool.
Multi Port	46"x30"	ABS	1-1/2" Hose Cuff or 3/8" Tubing	YES	High traffic areas, such as doorways. Extraction port is located on one side of the panel, minimizing trip hazards. Gasket allows for tighter seal.
Small Single Port	10"x30"	ABS	1-1/2" Hose Cuff	YES	Ideal for tight spaces, can also be used in high traffic areas, such as doorways. Extraction port is located on one side of the panel, minimizing trip hazards. Gasket allows for tighter seal.



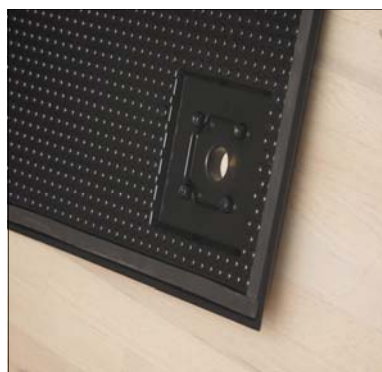
Clear 4 Point Panels

Multi Port & Small Single Port Panels

Variety Pak: Includes each type of panel for versatility



8 Point Panels



SETTING UP THE PANELS

Once you have chosen to use Vac-It Panels to dry a surface (using the principles of "TAME"), determine the amount of foot traffic during the dryout. **Always** keep the amount of possible trip hazards to a minimum and make sure that you post signs alerting everyone to the possible dangers. Even if the traffic is limited to work crews, the danger should be noted.

Before you lay out the panels, consider where the HP unit will be placed in order to configure the best positioning of the equipment such as the hoses (minimizing walkways, doorways and etc.). Then place the panels on the surface and double check your placement.

It is not necessary to cover the entire area to be dried. The Vac-It Panels can be placed 2-3' from each other and in most cases will pull the moisture out of the material between them (along the flute lines). We do recommend covering 100% of the floor across the width of the wet areas, as the flutes do not go across the width.



We always recommend taping down Vac-It Panels, even if they have a gasket. If you don't tape them down you risk:

- A) creating a slippery, dangerous environment causing someone to fall.
- B) dislodging the panel from the floor, breaking the seal thereby compromising the dryout.

*We recommend using a tape called PRESERVATION TAPE to seal the Vac-It Panels to the floors, as it is less sticky but strong enough to hold the panel to the floor. By gently pulling



up a corner of the taped panel, you can often check moisture readings without applying more tape.

Each job varies as to the number and type of panels needed. Large and small panels are available. Single Ports Panels are easier to set up with fewer trip hazards in a large space. There are many variables that make each job unique:

- moisture content
- the thickness and quality of finish on the surface
- the type of substrate
- whether or not the substrate is affected and to what degree

*Drying times can range from 1 day to over 10 depending on the variables.

SETTING UP THE PANELS

The 8 Point Panels can be left full size or cut into smaller custom sections. It is as easy as 1-2-3. All you need is a safe cutting surface to make the panel smaller, a utility knife, safety glasses and gloves.

Step 1: With the 8 Point Panel in front of you, lay out on flat surface (make sure that you won't cut anything below if your utility knife slips or cuts through the panel).

Step 2: The 8 Point Panel has a 2" gridless section running between each port. Lightly score a line between the grid pattern. Run your knife across it several times. It won't take much force.

Step 3: With gloves on, gently bend the panel along the scored line (away from face or skin) and "snap" off the smaller piece. Make sure to debur (remove sharp edges) the edges of the panels before putting into service.

* (Keep in mind that while 8 Point Panels offer the versatility of downsizing for a specific fit, they should be used at the sides of a room or in areas of less traffic) Multi Port and Small Single Port Panels have extraction points placed in the corner which allows for a neater setup (less trip hazard) when drying out a large area.



Hoseline connects to Panel T's on the Multi and Single Port Panels

PHOTO GALLERY



U-Panels fitting around toilet

HP60 shown with Silencer drying hardwood floor with Multi Port and Small Single Port Vac-It Panels



HP60, Silencer, Interceptor HEPA drying hardwood Floor with multi Port Panels

PHOTO GALERY (continued)



Not a pretty picture! The hardwoods were cupping, the walls were wet and Injectidry's HP60 set up with the Interceptor and Vac-It Panels saved the day! This kitchen was dried out and repaired while the customer remained in their home. The cabinet had to be removed because drywall had to be replaced behind it due to mold contamination. Water had been present but undetected for over a month.

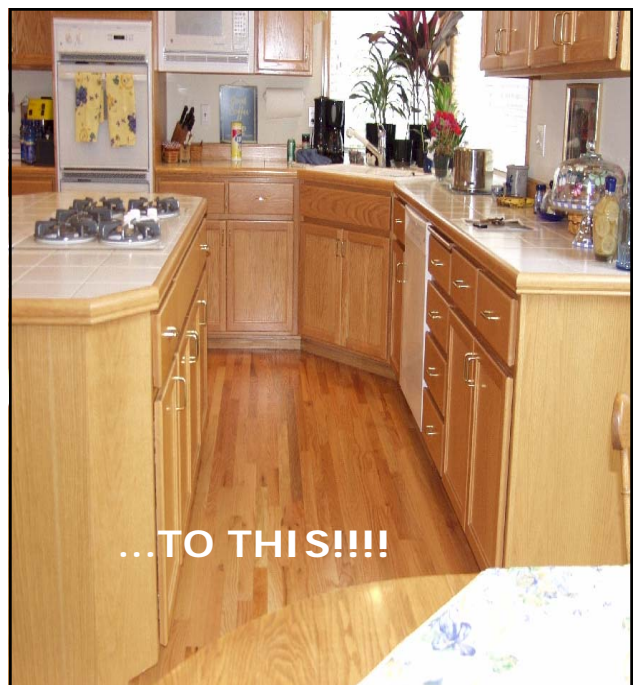
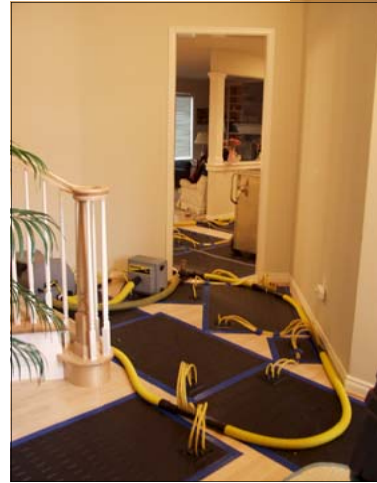


PHOTO GALERY (CONTINUED)



Wet hardwoods in
a brand new home
- saved with Injec-
tidry's HP60, Inter-
ceptor, and Vac-It
Panels!

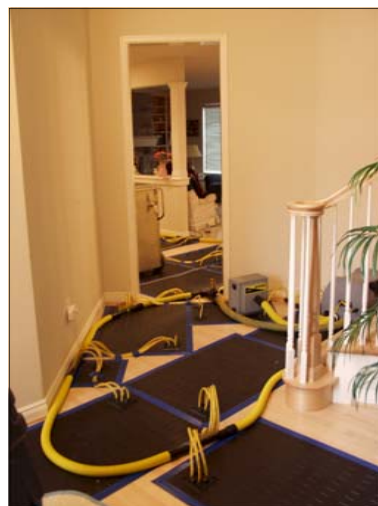


PHOTO GALERY (continued)



Vacuum drying and the use of HEPA Filtering systems, allows homes and businesses to be used during a dryout. (Large Single Port Panels shown)



PHOTO GALERY (continued)



WARRANTY

VAC-IT PANELS—1 Year

Limitations: This warranty will not extend to Injectidry products showing any accidental damage, alteration, normal wear, disassembly, lack of proper maintenance, damage from fire or flood, damage from corrosive or other chemicals, improper voltage use, unauthorized repairs, use of non-genuine parts and materials, misuse, or any other causes beyond the control of Injectidry. The warranty obligation extends only to the repairs or replacement of parts found to be defective upon the examination and the decision of Injectidry Systems. Gaskets are warranted at time of delivery, if shipping damage has occurred we will repair/replace the gasket. Customer must notify Injectidry within 72 hours of receiving materials.

The preceding limitations constitute the entire warranty. No other warranty or responsibility is expressed or implied. The warranty includes legal rights to the original purchaser, and additional rights may be available, varying state to state. In addition, Injectidry Systems Repair Department must authorize all incoming products and/or repair work to be completed by an authorized repair center. Injectidry Systems is not responsible for any repairs or modifications to any of its products, unless completed by Injectidry Systems or an authorized service center. We are not responsible for subsequent damaged caused by the user and or its agents.

Bulk Water*: It is particularly important for the user not to allow bulk water to pass through the HP unit. This can happen on negative suction if water is present in the area of the injectors. Elevated humidity is not considered Bulk Water.

CUSTOMER SERVICE

If you need technical support or to order parts - please call one of our customer service reps. Our commitment is to taking care of your needs in a fast and courteous fashion.

Incomplete Shipments

All shortages must be reported within five business days.

Be sure to check the number of cartons or packages. You can compare this count with the total listed on Bill of Lading. Confirm that you have received all cartons or packages pertaining to this shipment.

If quantities do not match, have the delivery driver note shortage. If the missing cartons or packages do not show up in the next few days, contact the Shipping Department and we will reship on a new order.

You must file a Freight Claim for shorted packages if the count differs from the Bill of Lading. For your protection, the carrier who delivers merchandise to your door is responsible for any loss or damages. Acceptance of the shipment by the carrier company is acknowledgement that the articles were delivered to them were in good condition and properly packaged.

Freight Damage

Orders are shipped Freight On Board (F.O.B.) from our warehouse in Lynnwood WA. Once the product has shipped to the customer, it is the customer's responsibility. We will assist the customer in filing any freight damage claims but these claims must be filed by the recipient.

We suggest that you carefully inspect your shipment upon receipt. If there is visible damage, note this on the waybill before you sign and notify the carrier immediately of any damage discovered.

We want to know if there are any freight damages, so please contact our shipping department right away.

CONTACT US

Our phone number:
425-822-3851

Our fax number:
425-745-8480

Our toll free number in the US and Canada:
800-257-0797

On the Web at:
www.injectidry.com